





the alumni magazine of washington and lee
(USPS 667-040)

Volume 56, Number 5, September 1981

William C. Washburn, '40*Editor*
Romulus T. Weatherman*Managing Editor*
Jeffery G. Hanna*Associate Editor*
Robert P. Fure*Assistant Editor*
Joyce Carter*Editorial Assistant*
W. Patrick Hinely, '73*Photographer*

TABLE OF CONTENTS

Institute for Executives 1
 "Ping-Pong Education" 6
 The Photographs of Nancy Spencer 9
 W&L Gazette15
 Chapter News23
 1980-81 Annual Fund24
 Class Notes26
 In Memoriam34
 Supply Store Gifts35

Published in January, March, May, July, September, October, and November by Washington and Lee University Alumni, Inc., Lexington, Virginia 24450. All communications and POD Forms 3579 should be sent to Washington and Lee Alumni, Inc., Lexington, Va. 24450. Second class postage paid at Lexington, Va. 24450 and additional offices.

Officers and Directors
Washington and Lee Alumni, Inc.

- JAMES F. GALLIVAN, '51, Nashville, Tenn.
President
- JOHN H. McCORMACK JR., '50, Jacksonville, Fla.
Vice President
- W. DONALD BAIN, '49, Spartanburg, S.C.
Treasurer
- WILLIAM C. WASHBURN, '40, Lexington, Va.
Secretary
- LEROY C. ATKINS, '68, Lexington, Va.
Assistant Secretary
- PETER A. AGELASTO III, '62, Norfolk, Va.
ANDREW N. BAUR, '66, St. Louis, Mo.
EDGAR M. BOYD, '42, Baltimore, Md.
OWEN H. HARPER, '59, Pasadena, Calif.
CHARLES D. HURT JR., '59, Atlanta, Ga.
SIDMON J. KAPLAN, '56, Cleveland, Ohio
G. RUSSELL LADD, '57, Mobile, Ala.
WILLIAM E. LATTURE, '49, Greensboro, N.C.
J. WILLIAM McCLINTOCK III, '53, Tunica, Miss.
WILLIAM C. NORMAN JR., '56, Crossett, Ark.
S. MAYNARD TURK, '52, Wilmington, Del.



ON THE COVER: Scenes from a marriage of business and the humanities. W&L's Institute for Executives brought 19 corporate executives and several W&L faculty members together for two weeks of reading and discussion in June. Beyond such classic authors as Shakespeare, Plato, and Thoreau, the participants examined the issues and value conflicts involved in the daily life of the modern business executives. *Photos by W. Patrick Hinely, '73*



The lecture: an important component of the Institute for Executives

REALIGNING THE BOTTOM LINE

W&L's New Summer Institute for Executives: Issues in Humanities and Business

by Robert P. Fure

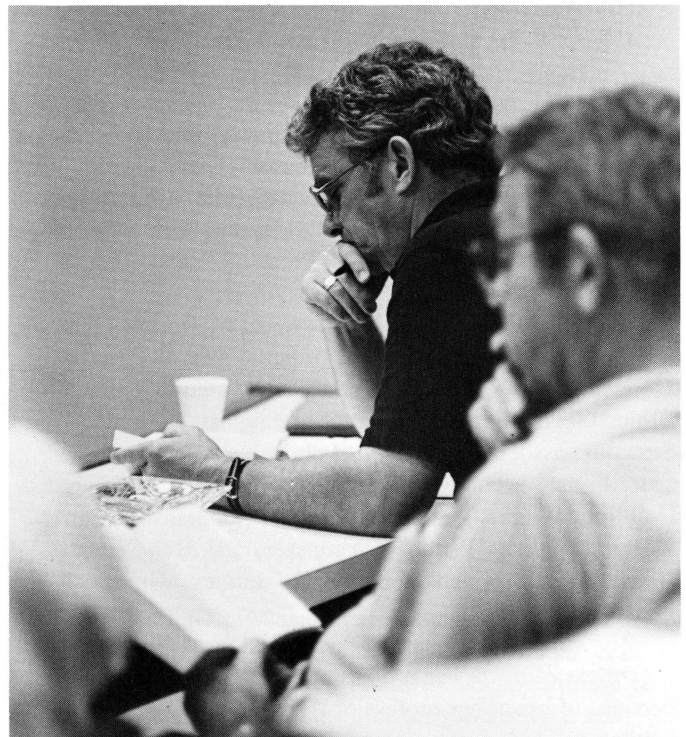
"We would have fired the guy," says Joe Vengrouski, corporate personnel director for Gulf States Paper Corporation. "But now I'm wondering, would it have been wise to dump the best man on the payroll?"

Vengrouski and several other corporate executives are pondering Antony's dilemma in Shakespeare's *Antony and Cleopatra*. Mark Antony, wracked by a catastrophic mid-life crisis, is torn between his love for Cleopatra and his responsibilities as triumvir of the Roman Empire. Stirred by Shakespeare's compelling drama, the 19 businessmen who constitute the Institute for Executives class of '81 are drawn into the deeper human dimensions of Antony's torturous predicament.

"Maybe he could have been reassigned. Still, that might have set a dangerous precedent."

Mike Turin, world trade systems director for IBM, muses, "I've seen more men than I care to remember destroy brilliant careers, not to mention themselves, over a woman. It's pathetic. But Antony is in a touchy situation, no doubt about it. Either way he loses. After all, what is power without love?"

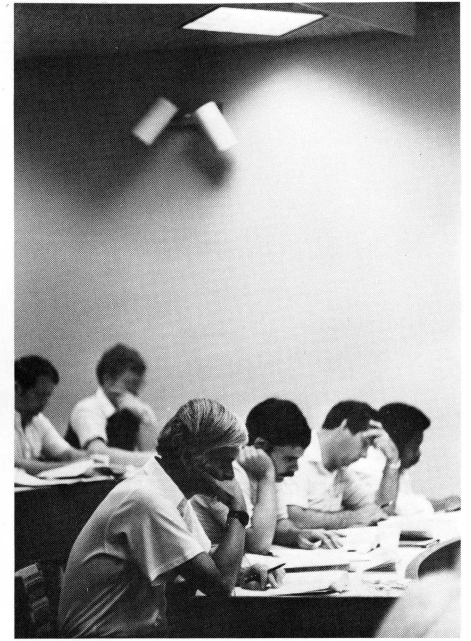
It is the fourth day of the Institute's two-week program. The executives are using "but," "still," and "however" more frequently now as they explore the rich ambiguities of Shakespeare, Melville, and Plato. They are for a time beyond



Decisions, decisions, decisions



Post-softball camaraderie



Studying the texts

the “either-or” world of snap judgments. Ahead of them wait Sophocles, Thoreau, Kierkegaard, Frost, Faulkner, and Freud. The arena of decision making broadens as the Institute extends its survey of classic texts in Western literature and philosophy.

Washington and Lee’s inaugural Institute for Executives,

The simplest rationale of the Institute was that everyone, regardless of his or her profession (or, in this case, especially because of his or her profession), should read a few good books.

held June 14-27, brought to the campus curious and initially skeptical corporate management for an intensive reading program in the humanities. They came from as far away as Colorado, Massachusetts, and Florida, and from companies as diverse as IBM, AT&T, Best Products, Veeco, Philip Morris, and the Roanoke *Times & World-News*.

Standing about in the chilly foyer of McCormick Hall on the day of registration were the program’s faculty: Louis Hodges, director of the University’s Program in Applied Ethics; Severn Duvall, professor of English; W. Lad Sessions, associate professor of philosophy; and, myself. Later in the session we were joined by Professors Sidney Coulling, (English), Clark Mollenhoff (journalism), Carren Kaston (English), William Rasmussen (art), Rob Stewart (music), and President Robert E. R. Huntley, who served as guest lecturers.

The simplest rationale of the Institute was that everyone, regardless of his or her profession (or, in this case, especially because of his or her profession), should read a few good books.

Though the Institute’s two-week program of reading and

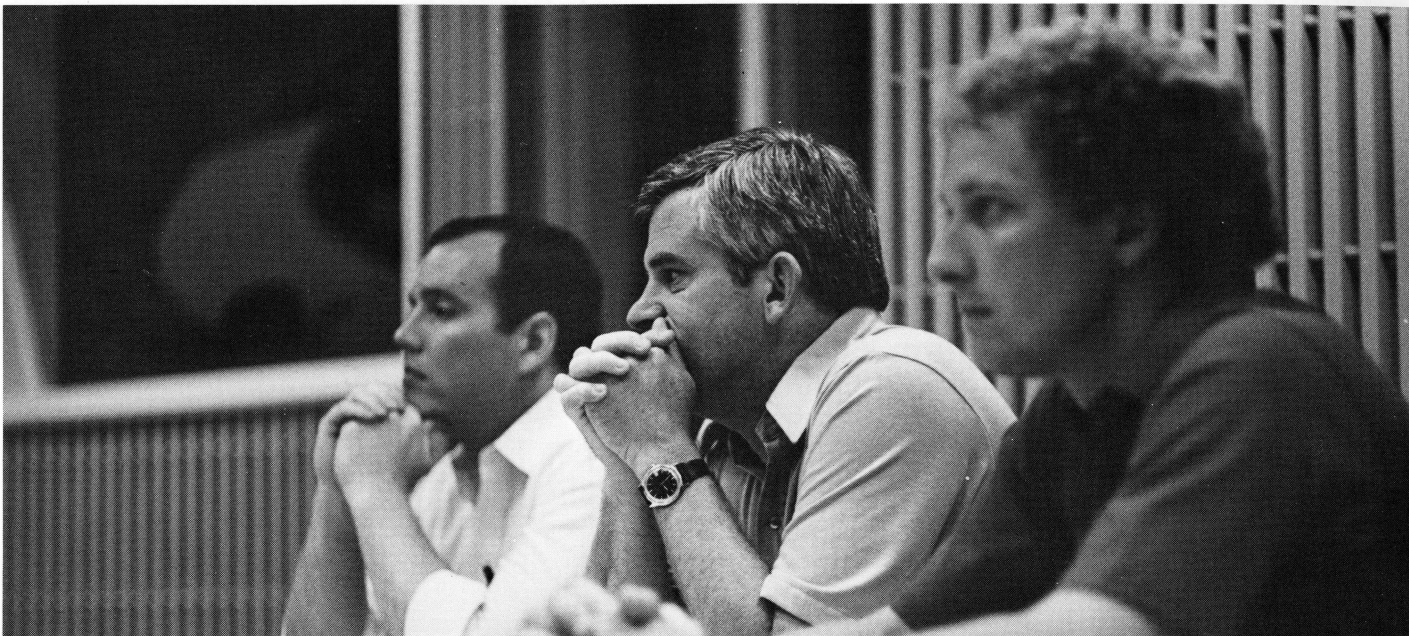
discussion focused primarily on literary and philosophical texts, part of each day was set aside for business case studies. Such issues as conflicts of interest, corporate misconduct and whistleblowing, and union-management frictions brought the faculty into the nitty-gritty province of the Bottom Line.

No English professor is comfortable explicating little narratives of cost analysis. But more often than not the Institute’s major texts provoked discussions that produced surprising and penetrating insights into the moral and human questions underlying many corporate problems. As Robert Huntley, speaking from his position as both University president and board member of several corporations, observed during one of the Institute’s early sessions: “The humanities can bring the ages to bear on the context of the businessman, whose world is constantly changing.”

Kierkegaard’s analysis of religious faith in *Fear and Trembling*, for example, enabled one executive concerned with the cultural interface of multinational corporations to gain a clearer sense of the bewildering values of Arabic economics: “If, as Kierkegaard says, mankind’s highest passion is to embrace the incomprehensible, then I can begin to understand the strange obsessions of the sheiks.”

The effective executive must have the insight, imagination, and wisdom—the larger vision—“to anticipate these human problems before they become crises and to discern ethical principles for solving them.”

A personnel manager of another company found in Thoreau’s *Civil Disobedience* an eloquent expression of the independent mind: “I can’t quite agree with Thoreau, but his elaboration of the non-corporate mentality certainly helps to explain the opposition. It is always useful to consider



From Plato to Faulkner: an intensive reading program

different perspectives . . . At least I don't *think* I agree with Thoreau."

The subject of W&L's first Institute for Executives was, neatly, the same as its goal: human decision. In the planning stages for over a year, the Institute had been designed by its faculty and administration to extend to the business community its humanistic philosophy and to share its

Such issues as conflicts of interest, corporate misconduct and whistleblowing, and union-management frictions brought the faculty into the nitty-gritty province of the Bottom Line.

conviction that, in a healthy society, studies in the humanities and the concerns of business ultimately merge.

Serving as advisers for the project were Richard T. De George, University Distinguished Professor of Philosophy at the University of Kansas, brought here as a consultant by a National Endowment for the Humanities grant; Andrew Lewis, president of Best Products, Inc.; Ross Millhiser, vice chairman of the board of Philip Morris, Inc.; and, T. Justin Moore, chairman of the board of Virginia Electric and Power Co.

As the point of connection between the humanities and business, the Institute planning committee selected ethical decision making as the program's focus: "Corporate executives face the task of dealing with problems that involve competing goals, diverse value judgments, and complex ethical issues, problems that deal not so much with products as with people." In formulating the program's rationale, the Institute planners understood that, as an executive moves up the corporate ladder, he encounters the value conflicts and ethical quandaries that daily confront decision makers at

higher levels of corporate management. The effective executive must have the insight, imagination, and wisdom—the larger vision—"to anticipate these human problems before they become crises and to discern ethical principles for solving them."

How does he gain this wisdom? Partly through on-the-job experience, of course, but also off the job, through the experience of the timeless products of men's minds: good books. Such a rationale implies that a successful corporate leader must be both a reader and something of a casuist. True enough. "It's like Captain Vere," observed Joel Anderson, president and chief executive officer of South Georgia Natural Gas. Vere is the perplexed protagonist of Melville's *Billy Budd*, the Institute's opening text. After the fatal conflict between Billy Budd and Claggart, Captain Vere alone must measure right against wrong, anchor his judgment in the context of human history, and then guide his men through their own ambivalent arbitration. "Vere could have chosen to see the dilemma simply as a personality conflict—indeed, as it first seemed to me," Anderson confessed. "But

'If, as Kierkegaard says, mankind's highest passion is to embrace the incomprehensible, then I can begin to understand the strange obsessions of the sheiks.'

it's much more than that. It's a conflict of values, a tragic one."

This is the kind of sensitivity to ethical issues and conflicting values that the Institute sought to cultivate in its participants. While it did not presume to dictate formulae for moral problem-solving, the Institute program offered text after text that present men and women—from Abraham to Antigone—in the act of complex human decision.



The basic bull session



Small discussion groups produced penetrating insights.

What the participants learned from the experience was finally what they could teach themselves and each other: "The Institute was very helpful to me in my efforts to acquire a better understanding of myself and my values, as well as a clear sense of value choices and conflicts," said Anderson at program's end. "While it might be difficult to assign a dollar value to what I learned, that other Bottom Line, *ethics*, is so important that the course was extremely worthwhile. I really enjoyed the two weeks."

In his keynote address, Sidney Coulling, professor of English, cited Alfred North Whitehead's challenging pronouncement: "There is a great function which awaits the American universities, and that is to civilize business: or, better, to get businessmen to civilize themselves. . . . It is not enough that they should amass fortunes in this way or that and then endow a college or a hospital. The *motive* in amassing the fortune should be *in order* to use it for a socially constructive end. . . . If America is to be civilized, it must be done . . . by the business class, who are in possession of the power and the economic processes."

But Coulling also cogently observed that the universities can learn from the business community as well. One of the

"The Institute was very helpful to me in my efforts to acquire a better understanding of myself and my values, as well as a clear sense of value choices and conflicts."

—Joel Anderson, President and Chief Executive Officer
South Georgia Natural Gas

most gratifying rewards of the Institute was the learning experienced by the regular faculty. Lad Sessions celebrated the Institute's free exchange of ideas, citing the continuous dialogue between faculty and participants: "By the second

week it had become clear to me that, while businessmen may need to generalize, we at the same time need to be more specific."

The application of human values to concrete situations was a frequent challenge to the faculty. Business case studies

" . . . while businessmen may need to generalize, we at the same time need to be more specific."

—W. Lad Sessions, Professor of Philosophy

soon revealed that the world of the corporate executive is much more fluid than the fixed circumstances of novels and plays. Haunted by changing contingencies, the situational ethicist becomes a less confident decision maker.

As the program developed, the participants themselves seemed often more readily able to formulate ethical criteria for decisions than the faculty. "They were fast learners," admitted Severn Duvall. "It was often a task just to keep up with them."

Lou Hodges, director of the Institute, found himself much more fiscally conservative and less supportive of corporate good-will investments in public benefit programs than several executives. "I got myself into a terrific argument over corporate support of public television. It seems to me plain thievery," Lou grouched, his eyes glinting with orneriness and mischief, "that some guy up on the twenty-third floor can take away some of the investor's profits and throw it at some program on whales."

Perhaps the greatest reciprocal benefit of the Institute was the understanding each community gained of the other. Several participants praised the degree of involvement of the faculty in all phases of the program—"commitment, intent, attitude, labor, and concern: A+," wrote Robert Hall, vice president of T. Rowe Price Associates, Inc.



Not all the food was for thought. . . .



Some T-shirt philosophy

Through such contact, faculty and participants alike were able to discover common bonds of humanity linking all members of the group, as well as a deeply shared commitment to improving the quality of life in America. "Men work together," they read in Robert Frost, "whether they work together or apart."

Not all activities during the Institute for Executives were conducted on the plane of high moral seriousness. A close camaraderie among faculty and participants developed through various recreational activities as well as late night

Business case studies soon revealed that the world of the corporate executive is much more fluid than the fixed circumstances of novels and plays.

bull sessions. A day at Skylark, W&L's superb retreat at the crest of the Blue Ridge Mountains, during the middle weekend proved a pleasant relief from the intense reading schedule. Volleyball, swimming, tennis, hill climbs, and a rather grand game of croquet on the knob of one of the mountains kept the group moving—and arguing.

On most days of the program, each participant had ample opportunity to break from the reading for a leisurely swim, a game of tennis, or a quick round of golf—the governing principle being that all work and no play makes Jack a scholar. Other mildly diversionary activities included an evening with W&L's Pulitzer Prize-winning Professor of Journalism Clark Mollenhoff, lectures on corporate investment in fine art and decision making in musical composition, a local theatre production, and a showing with commentary of Orson Wells' film classic, *Citizen Kane*.

Throughout the program much of the social conversation

was anecdotal and, thus, difficult now to rehearse. The daily cocktail hour frequently erupted in hilarity at the antics and astonishing wit of Mike Turin, a short, wiry New Yorker, and Bill Tutt, a huge, robust hotel executive from Colorado.

On the final afternoon, the group convened for a rollicking game of softball. One of the players, Jerry Hess, director of public relations for Kelly-Springfield Tire Co., fashioned a uniform for himself emblazoned with a coinage that became a motto for the Institute program: "Ethics: the Bottom Line."

Such recollections become desultory and, doubtless, rather tedious to those who did not share the Institute experience. Those who did participate in the program can be expected to run on about it, now that they have caught their wind.

To summarize, however, Washington and Lee's first Institute for Executives was a gratifying, immensely enjoyable success—"I can unequivocally say that it was a great learning experience"; "not only interesting and enlightening, but certainly also very profitable"; "a very rewarding experience."

Perhaps the greatest reciprocal benefit of the Institute was the understanding each community gained of the other.

The endorsements from the participants, at this writing, are still arriving. Also at this time, plans are forming for Washington and Lee's second annual Institute for Executives—the next expedition for the ultimate bottom line.

The author, formerly assistant professor of English at W&L, is now director of Summer Programs for the University and assistant director of publications.

'PING-PONG EDUCATION'

Visitors from Rikkyo University Like the Student-Faculty Give-and-Take at W&L

Remember the days of "Ping-Pong diplomacy"?

Well, you won't find mention of it anywhere in the official catalogue, but Washington and Lee offers its students "Ping-Pong education."

That, at least, is the way two Japanese visitors—one a student, one a teacher—chose to describe the educational process they encountered at W&L.

James Takashi Yashiro is dean of students and professor of Christian studies at Rikkyo University, a highly-esteemed private college of 12,000 students located in Tokyo.

Kazuhiro Hazama is a senior at Rikkyo where he is majoring in industrial relations in the school of social relations.

Both men spent the 1980-81 academic year at Washington and Lee: Yashiro as Howerton Scholar-in-Residence and visiting professor of religion, Hazama as a participant in the student exchange program between W&L and Rikkyo.

Before they returned to Japan in June, Yashiro and Hazama reflected upon their W&L experiences in an interview.

Of all the impressions they had formed of the University, none made more impact upon them than the relative informality of the student-teacher relationship at W&L—relative, that is, when compared to Rikkyo, where size and tradition dictate a much more formal atmosphere.

That informality, they agreed, breeds a distinctive classroom style—a style characterized by the tendency of professors to talk *with* their students rather than *at* them.

"I would describe the learning process at Washington and Lee as a Ping-Pong match," said Hazama, known as "Kaz" by his fellow students at W&L.

"Here, the information goes back and forth between the student and the teacher. It is a Ping-Pong match in which the people really deal with each other and give it all they've got in that relationship. It is very productive, I think.

"In Japan, on the other hand, it is one-way traffic for the most part. The relationship between students and professors is stiff and formalized, not at all like here."

Yashiro took that comparison a step further, suggesting that the difference in

educational styles is, in part at least, directly related to basic differences in the structures of the societies.

"Japanese society is a very vertical society as contrasted with the democratic society you have here in the United States," explained Yashiro. "When we are talking to someone above us, we must use terms of respect. Students *must* be very polite and formal to a professor no matter what they might think of him. It is a cultural thing."

Yashiro, like Hazama, found the close student-teacher relationship at W&L an invaluable asset—as invaluable for the teacher as for the student, a Ping-Pong match in which both players win.

"At Rikkyo," said Yashiro, "I just go and give lectures and at the very end of the year we have the final exams. I grade all the papers, and it makes no difference whether I flunk half the students.

"But here at Washington and Lee I have had to be very, very concerned with each individual student with whom I have studied. I must read their papers carefully and grade each one carefully. From time to time, they have come to me to ask questions about something I have said in class, and we have dialogue about that. There is a personal touch in the way I have taught here that is not present in my teaching at Rikkyo.

"Instead of simply delivering lectures to classes of 200 or 300 students, I have had to watch every student here very carefully. Because of that, I have learned quite a lot from the way students are thinking. I realize sometimes the way, the angles, students are looking at things are quite new to me."

Yashiro was not altogether unaccustomed to the approach he found at Washington and Lee, though. As an undergraduate, Yashiro studied at Kenyon College in Ohio, where he learned to appreciate the advantages of a less formal, more personal style. He was even prepared for the lifestyle of a small, rural, college community.

"Why, I even belonged to one of those naughty fraternities," said Yashiro, laughing his hearty laugh. "I am used to this kind of life."

If there was one thing that did surprise Yashiro, however, it was the diligence with which his Washington and Lee students approached their studies.

"I think the student here at Washington and Lee works harder than the Rikkyo student," said Yashiro, who taught courses in Japanese culture and Christian thought as well as a seminar on Buddhism and Christianity. "I do not think that means American students are brighter than Rikkyo students or vice-versa. I simply say they work harder."

That discovery bodes ill for those Rikkyo students who enroll in one of Yashiro's classes this fall. Late in his tenure at W&L, Yashiro dashed off a letter to his dean, vowing that "I am not going to pass anyone anymore who doesn't study for my classes."

As in the case of the comparative informality of the student-teacher relationship, the difference in the students' industry at W&L and Rikkyo is partly a reflection of other differences underlying the structures of the two societies.

"The major difference is that we have very, very stiff competition in getting into Japanese colleges," Yashiro explained. "Students compete to get a place in the most prestigious college by scoring well on entrance exams. But once you are in, it is very, very hard to fail.

"Japanese students work to get into colleges while American students work to get *out* of college."

As an example, Hazama had to attend a preparatory school for a year before he could earn acceptance to Rikkyo.

"The key," said Hazama, "is to get into a good college in the first place. Once you're in, you can float your way through. When you get out, the kind of job you get depends largely on the status of the college you were able to get into. I don't think that is quite the same here."

Hazama confessed he was unprepared for what awaited him in the classroom at Washington and Lee, primarily because his expectations were based upon a stereotype many Japanese students have of American colleges.

"It was different from what I had heard and what I had imagined an American college would be," Hazama said. "A good many Japanese exchange students go to schools on the West Coast. What you normally hear from them are stories about wild and thrilling kinds of things that go on



James Takashi Yashiro (left) and Kazuhiro Hazama found W&L a unique experience.

outside the classrooms at those schools—the beaches, the surfing, things like that.

“From hearing those things I think we assume that all American colleges must be that way and that the one word that sums up what college is like in America is “fun.” The feeling is that to come to the U.S. is to have a good time, not really to study. A lot of my Rikkyo classmates probably assumed that by coming to Washington and Lee to school I was actually taking a year off.”

And was it a year off for Hazama?

“Not at all. I agree with Professor Yashiro: the students work a lot harder here. They are serious about their studies. I really had to work to keep up,” Hazama said. “I had quite a lot of ups and downs. I expected too much out of myself when I first arrived. I was pushing myself, especially because of the language barrier. Eventually, I settled down and began doing things at my own pace.”

Hazama’s adjustment to the classroom was actually a breeze compared to his adjustment to the strange, new environment in which he found himself. After all, Lexington bears little resemblance to Tokyo—except, perhaps, for the omnipresence of camera-wielding tourists.

At times, Hazama wondered whether he had actually arrived on another planet instead of merely in another country.

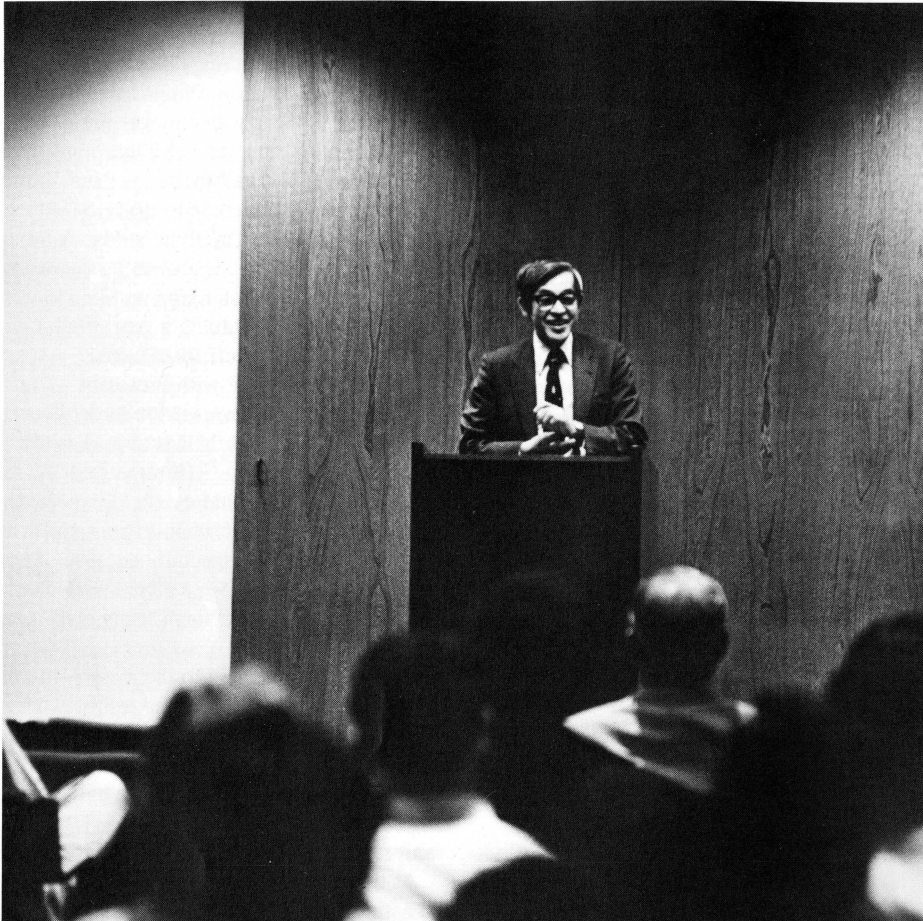
“I grew up in the heart of Tokyo,” Hazama explained. “If I step outside my door, I am in the middle of all the city’s activities. Lexington was quite a change for me.

“In fact, my first few hours here were rather terrifying. When I first arrived at the Roanoke airport and was driven to Lexington at night, it was the first time in my life that I had been on a road without any lights.

“That ride was a horrifying experience. All I could see was total darkness with maybe some dim lights in the distance here and there. It was a feeling of ‘Where in the world are they going to take me now?’ I have never seen so much vast open space.”

Once over the initial shock (and once the sun shed some light on his new world), Hazama found himself adjusting, ever so gradually, to a lifestyle that was unlike anything he had ever known.

“Tokyo provides so many different



As Howerton Scholar-in-Residence, Yashiro was a popular lecturer.

opportunities, so many different things that you can do. It is a very, very active place," Hazama explained.

"Once I got into this environment, I discovered that I slowed down. It is quiet and peaceful here. And the rhythm of life is so much slower. It gives you more time to think about yourself and what you're doing. That was valuable for me. I soon discovered that this is a very special environment."

That is not to suggest that everything about W&L and Lexington was to Hazama's liking. He was, for instance, shocked to discover that W&L is all male.

"I had gone to an all-male high school, but Rikkyo is coeducational," Hazama said. "Personally, I think you need a female relationship in a college environment because I think limited exposure to women can have a negative effect; men learn only limited ways of interacting with women since they

are not interacting with them on a daily basis."

This, however, is one part of their W&L experience on which Hazama and Yashiro disagreed.

"I felt much, much freer teaching all men," Yashiro said. "I had never studied with female students in my classes at Kenyon, so I felt more at home here. At Rikkyo where I teach coeducational classes, it is not always easy for me to give out bad marks to the women students. That was not a problem for me here. I felt freer dealing man-to-man."

Perhaps Hazama's most intriguing cultural discovery came the first time he wore a favorite shirt and was immediately classified as a "preppie" by virtue of the celebrated alligator.

"I didn't realize my alligator shirt was part of the preppie outfit until I came here,

but I discovered they cost about half as much here as they do at home so I did buy a couple of them to take back," Hazama said.

"Actually, college students in Japan do have a very distinct outfit that is called the 'Ivy Look' and involves blazers with emblems, thin ties, button down shirts, khakis, and the rest.

"But as for the 'preppie' look here in the U.S. I don't think I would wear a pair of lime green pants in Tokyo if somebody paid me a thousand dollars."

In truth, Hazama believes that he is more Americanized than some Americans.

"I have probably put more effort into learning about the United States than about my own country," he said. "This year, though, gave me an opportunity to reflect back more on my own country.

"I discovered that a lot of students in the United States are very proud of being American and of being in this country. Perhaps because of that, many are limited and also very biased in their knowledge of other countries and other cultures. They are not as exposed to other cultures as we are in Japan."

Yashiro, however, was gratified to find that American colleges seem to be placing greater emphasis on Asian studies nowadays.

"In my college days in the U.S., all we had to learn as history majors was American and British history. It is amazing for me to see how the school here put such importance on Asian studies," he said.

"Still, other people know America more than Americans know other countries. That is simply because people need to know America since it is a leader in the free world; they cannot afford to ignore America.

"By the same token, average Americans do not know much about Japanese people. Perhaps Americans need to learn more about other countries. And I think there are a lot of good signs in that regard now."

Certainly, the ongoing exchange program between W&L and Rikkyo is a step in that direction.

"One of the main things I learned during my year at W&L," said Hazama, "was how to interact with different kinds of people. And in learning how to do that, I learned a lot about myself. I think that is what the exchange program is all about."

by Robert P. Fure



Bizarrerie:

The Photographs of Nancy Spencer

Elephants à la Diana: “. . . faceless beasts, chained to a world of dubious festivity.”

In addition to its own fine photographic staff, Washington and Lee occasionally employs the eyes of two extraordinary local photographers. Both are women—mothers (with young children) and wives of W&L alumni—who are accomplished professionals devoted to their craft. They are as well close friends and earnest rivals, and they inhabit, in this small part of Virginia, visual worlds that are remarkably different from each other.

Sally Mann has given Washington and Lee perhaps the most memorable images of its recent self. For eight years as University photographer, she recorded the changing faces and moods of the campus and its people. Her portraits capture the University's serene reverence for its traditions, as well as the bold architectural developments of recent projects. Her photographic record of the construction of Lewis Hall, for example, now on permanent display in the law school, is a fascinating illustration of how the most mundane reality—in this case, a building not yet a building—can sponsor images of arresting beauty and suggestiveness. Another series of photographs, a group of fabric abstractions she calls “The Color Pictures,” is in the University's permanent collection.

Sally Mann's work has won numerous awards and distinctions. She has had showings at the Corcoran Gallery in Washington, D.C., and at several studios in New York City. She has been selected by Time-Life Books *1981 Photography Annual* as one of four international “New Discoveries.” In 1980, she won the Southern Women Photographers Competition. David Godine of Boston is publishing a book of her work as part of his series on contemporary photographers. Last year she retired from active service at the University to pursue her private projects and to raise a family.

Nancy Spencer's recent work was exhibited in Washington and Lee's duPont Gallery last April. W&L art professor Pamela Simpson, who helps coordinate gallery exhibitions, reports that she has never seen a show that aroused as much enthusiastic attention.

The Spencer exhibition consisted mainly of photographs taken with a “Diana,” a \$1.75 plastic lens camera—the sort given away at carnivals. The camera's cheap construction produces notorious aberrations: light leaks, fogging, vignetting, and image distortion. Serious photographers have been

experimenting with the Diana for several years as an alternative to the high-priced, perfect resolutions of Nikons and Leicas. Its challenging limitations also create marvelous opportunities for creativity, and in some cases even a more direct revelation of a subject's special significance.

One of the photographs in the duPont show, for example, depicts two elephants in a circus. The Diana's restricted area of focus serves to maximize an eerie tension in the setting. The scene is lit by a gloomy, ominous sky; a strong wind whips the flags above the circus tent; at the center, the massive, wrinkled bulks of the elephants are about to touch. The moment has a powerfully dramatic quality made virtually incandescent by the Diana's tendency to gather the most light in the center of each frame. Because of the camera's limited area of focus, the elephants remain anonymous—dark, faceless beasts, chained to a world of dubious festivity. Yet, in Nancy Spencer's hands, the Diana zeroes in on a facet of the scene that evokes somehow a momentous wildness: elephants, swaying in a cramped, civilized space, about to collide.

“The Diana says what I want to say,” Ms. Spencer remarks.



Spencer by Mann: a prize-winning photographer's portrait of her colleague.

Looking at her Diana photographs, she is more readily reminded, she claims, of what she felt like at the time she shot the picture. In a curious way, the camera, through its distortions, instills a vaguely mnemonic quality in the photographed image. It is as if one were looking at a memory: one central detail, with the rest of the event faded and unfocused.

"It's a very nostalgic camera," she says, smiling.

Her interest in the grotesque and mysterious, however, prevents such "nostalgia" from ever seeming maudlin or sentimental.

She remembers her first Diana photograph: "I was at a photo workshop in Maine and picked it up as a gift for the kids." On her first day home, she used the camera to photograph a cat encountering a snake. "I was knocked out by the results," she says, "so the kids never got their present."

The photo does have an intriguing quirkiness: in a fish-eye world of prickly grass, a garter snake twists toward cover, while a cat, with typical feline assiduousness, scrutinizes every wriggle. It is another instance of "encounter," Nancy Spencer's version of Cartier-Bresson's "decisive moment," a motif that is clearly a favorite of hers, yet one that does not confine her to any narrow range of moods.

"That was two years ago, yet I feel that I've just scratched the surface of the camera's potential," she says.

Some of Ms. Spencer's Diana photographs border on abstractions, like the

exquisitely simple "Picket Fence." The stark contrasts of verticals and diagonals, black and white, reduce the viewer's frame of reference to an elemental plane of lines, darkness, and light. It is an image without narrative dimension, only its own playful movement into and then beyond our focal point.

Other Dianas tell whole stories. In one, a mother stands with her young daughter gazing across a distant field. It seems an image right out of Winslow Homer, yet here Ms. Spencer has chosen to capture the mood of melancholic reverie from the figures' backs and at the level of the child's eyes. Only the mother's hip and elbow, those parts of her closest to the child, are in focus. The little girl, alert to some mystery beyond us, fidgets with her dress, dissolving into the frame's hazy edge. It is a photograph that perhaps only marriage and motherhood could make, and it is done with an artistry that has found the most strategic point of view for its narrative.

Nancy Spencer studied photography before graduating from Hollins College in 1969. She resumed her interest five years ago, working as Sally Mann's assistant in the Washington and Lee Publications Office, where she learned among other things how to shoot "the standard head-and-shoulders pictures of lacrosse players." She broke into freelancing in 1978. Since then she has earned several commissions, a few prizes, and a growing recognition in the Virginia-Carolina region, though not yet the broad celebrity of her former mentor.

When discussing her career and her

ambitions, she has the modest impatience of one who would rather talk about photographable subjects: "I love recording my family, my children as they're growing up."

When pressed about the general oddness of her portfolio, she allows that she favors "a magical, mysterious dimension to everyday reality, very special moments in my life when life seems to be imitating art." Such moments are, of course, what serious photography always seeks. They are not often found, but Ms. Spencer seems to have in her pursuit uncanny good luck.

In another circus photograph, for example, she seems to have found, poised for a moment in its pilgrimage a major portion of the human race. It is humanity, from "ape to Z." The picture displays a fascinating tableau of faces and expressions—curiosity, doubt, anticipation, bemusement—as well as a clever enactment of the monkey's teaching: "speak no evil, see no evil, hear no evil." Many of Ms. Spencer's photographs have such a wealth of suggestive imagery that, dropping her lens, she might easily become a symbolist poet.

Her pursuit of the "magical, mysterious dimension of everyday reality" is evident in the delightfully intriguing photo of a white rabbit under a moon, two piercing points of light in a haunted gloom. But the most magical, certainly, is her long series of "fairy pictures." Made in collaboration with her children, these photographs capture light streaking across floors, ceilings, and walls.

"These are fairy paths," she says, winking. "And where they cross you find a little energy field."

"Fairies can appear in any house," she continues. "They have to have an access and then an easy exit. If they can't get out, you got troubles."

The little story broadens into metaphors of her own life.

"I took up photography again five years ago when I felt I was going crazy," Nancy Spencer explains.

The comment has the light-hearted, self-deprecatory humor that characterizes her descriptions of herself and her career as photographer, housewife, and mother in Lexington.

"I'm still going crazy," she adds, "but I have some wonderful photographs."

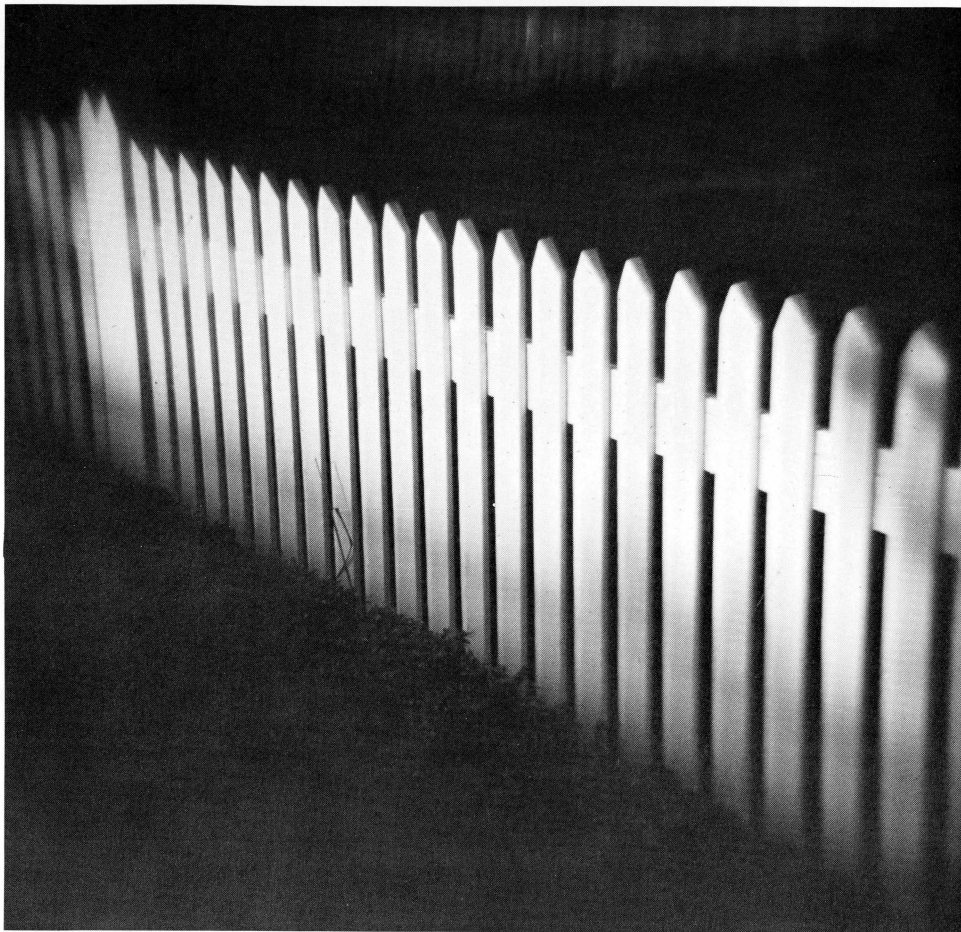
Perhaps twice a year, she estimates, that marvelous collision between foresight and chance produces a photograph worth saving: "When you arrive at that harmony—when you, the camera, and the event are one—then it all seems worthwhile."

A couple of months ago, Nancy caught her daughter, Beth, standing below a tropical plant, face up to the sunlight: "... my children as they're growing up."



*Cat and snake: capturing the
“decisive moment.”*

*Picket fence: “. . . an image with-
out narrative dimension, only its
own playful movement into and
then beyond our focal point.”*



Nancy Spencer

Mother and daughter: “. . . a photograph that perhaps only marriage and motherhood could make.”



From ape to Z: “. . . speak no evil, see no evil, hear no evil . . .”



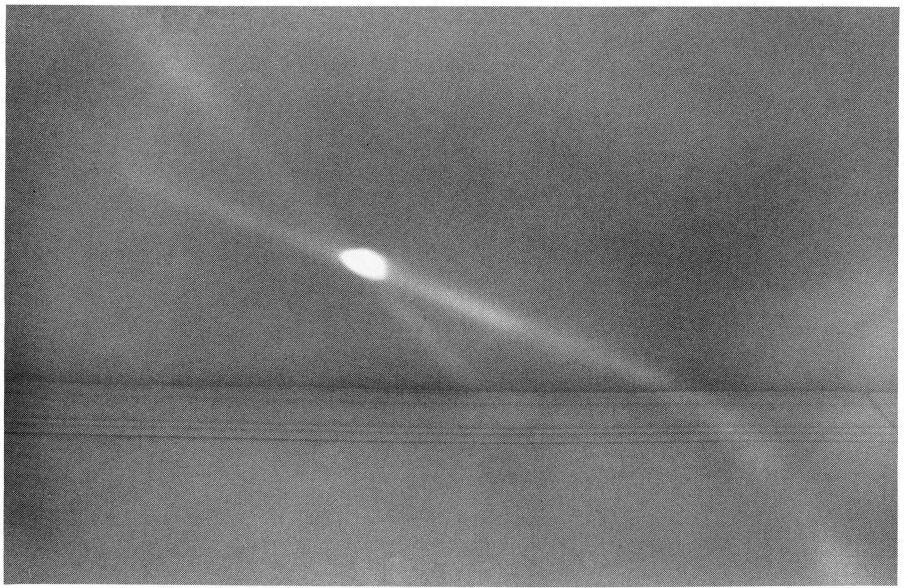


*Moonlight, mountains and rabbit:
“two piercing points of light in a
haunted gloom.”*

Nancy Spencer

*Fairy paths: "... where they cross
you find a little energy field."*

*Children growing up: "... the
marvelous collision between
foresight and chance ..."*



W&L GAZETTE

Steinheimer to Retire as Law Dean in '83; Search Committee Appointed

Roy L. Steinheimer Jr., dean of the School of Law, will retire from that position following the 1982-83 academic year.

Steinheimer will reach the customary retirement age during the 1981-82 academic year. But, at the University's request, he has agreed to remain in the deanship an additional year in order to facilitate a thorough and orderly search for his successor.

President Robert E. R. Huntley has announced the appointment of a search committee, which will begin immediately the process of identifying and screening candidates for the position.

Thomas L. Shaffer, professor of law, has been appointed chairman of the Dean-Search Committee. The committee members are Andrew W. McThenia Jr., professor of law; Joseph E. Ulrich, professor of law; and, Mark H. Grunewald, associate professor of law.

McThenia was a member of the search committee that recommended Steinheimer's appointment as dean in 1968.

According to Shaffer, no timetable has been established by the committee, which plans to solicit and accept recommendations from the widest possible audience.

Steinheimer became dean of W&L's law school on Sept. 1, 1968, succeeding Huntley in the position.

Under Steinheimer's guidance, the law school has flourished during the past decade, moving into Lewis Hall, its ultramodern, \$9-million facility in 1976, and instituting an admissions program that has made the law school a strong national institution with a more diverse student body than in the past.

A native of Dodge City, Kansas, Steinheimer came to W&L from the University of Michigan Law School, where he had been a professor from 1950 to 1968.

Steinheimer received his bachelor's degree from the University of Kansas and his law degree from the University of Michigan. He practiced law with Sullivan & Cromwell in New York City for 10 years prior to joining the University of Michigan faculty.

Steinheimer's primary field is commercial law. He served for several years on the Uniform Commercial Code committees of both the American and Michigan State Bar Associations. He is the



Dean Roy L. Steinheimer

author of numerous books and articles on legal matters, including the two-volume "Uniform Commercial Code Forms with Practice Comments" (1969) and the two-volume "Desk Reference to the Uniform Commercial Code" (1964).

In response to Steinheimer's decision to remain in his current post an additional year, President Huntley said: "Both the Board of Trustees and I are very pleased that Dean Steinheimer has agreed to our request that he defer his retirement as dean for one year past the normal retirement age. He has brought extraordinary ability, vigor, and leadership to our law school during a period of major growth and development. We will need a full measure of time to locate a person who can effectively succeed him."

Judge Brown bequest to School of Law

Washington and Lee received a bequest of approximately \$89,500 from the estate of the late Judge William Henry Brown, an Oklahoma attorney and a 1902 law graduate.

Brown died in February 1978 at the age

of 101. In his will, he designated his bequest for the "use and benefit" of W&L's law school. The bequest will be used to establish the Brown Fund in Endowment for support of the law school program.

A native of Mississippi, Brown was elected to the Mississippi legislature at the age of 23, two years before he entered W&L. He went to Oklahoma in 1906, one year before statehood, and was eventually named judge of the 5th Judicial District, noted for cattle rustling and bank, train and post office robberies.

He later served as assistant state attorney general, general counsel for the Oklahoma Corporation Commission, and Oklahoma City municipal counselor.

Scholarships established

A portion of a trust fund established under the will of a Charleston, W.Va., man will be used to provide scholarships for students attending Washington and Lee from two counties in West Virginia.

According to the bequest of William Baker Hall, who died in April 1981 at the

age of 91, Washington and Lee will receive 20 percent of the trust that is estimated at \$1 million.

Hall specified in his will that the University award the scholarship money to needy students from Jefferson and Kanawha counties in West Virginia.

A retired engineer for the West Virginia Water Company, Hall was born in Jefferson County and lived for many years in Kanawha County. He divided his trust among various institutions in those two counties in addition to establishing the scholarship fund for students of both counties.

Law school is host to judicial conference

Twenty-nine judges from state and appellate courts throughout the United States participated in a conference at the Washington and Lee School of Law this summer.

Entitled "Jurisprudence and the Humanities," the week-long conference was sponsored by the American Academy of Judicial Education, an organization which provides educational programs and serves judges throughout their careers.

The conference focused on the practicalities of judging, particularly the knowledge, skills and attitudes necessary to meet the ever-changing responsibilities of being a judge.

The conference coordinator was Marilyn Miller of the American Academy of Judicial Education.

Two Washington and Lee professors—Thomas Shaffer, professor of law, and Louis W. Hodges, professor of religion and director of W&L's Applied Program in Ethics—were members of the Conference faculty.

Kresge challenge grant for Tucker-Newcomb project

The Kresge Foundation of Troy, Mich., has made a \$250,000 challenge grant to Washington and Lee in support of renovation projects for two University buildings, Tucker Hall and Newcomb Hall.

To meet terms of the grant, W&L must raise the remaining cost of the renovation projects, estimated at \$1.5 million, by December 15, 1981. In order to receive the grant, \$500,000 in new gifts must be raised.

Both renovation projects were begun in



Computer Center in Tucker Hall.

1980 on the two buildings that are part of the University's front campus.

The \$400,000 project to remodel Newcomb Hall—the 97-year-old former commerce building at the south end of the Colonnade—has resulted in substantially improved facilities for four undergraduate departments in humanities.

Newcomb was in full use when classes began in September. Offices for 22 faculty members in history, sociology, philosophy, and religion have been provided as well as several spacious classrooms and seminar rooms.

The Tucker Hall project is a \$1.1 million renovation of the University's former law

school building. The renovated areas accommodate the University's computer center and psychology department. The classrooms and laboratories have videotape capabilities, which allow review of experiments. There are also specially designed areas for research work involving animals. Offices and classrooms have also been provided for the University's language departments.

The Kresge Foundation considered 1,551 qualified proposals in 1981 and awarded new grant commitments totaling \$33,354,000 to 176 charitable organizations, including Washington and Lee.

The majority of those grants were toward projects such as Washington and Lee's, which involved construction or renovation of facilities.

The Kresge Foundation was created solely by the personal gifts of the late Sebastian S. Kresge. Since 1924, appropriations of over \$416 million have been made to institutions in the areas of higher education, health care and related services, the arts and humanities, social welfare, science, conservation and religion.

Buddhism researched at Skylark conference

A research team engaged in a three-year study of Buddhism in Japanese civilization held its fourth conference, "Buddhism in Japanese Art," at Skylark, Washington and Lee's mountaintop retreat on the Blue Ridge Parkway, in June.

The research team, which includes Minor Rogers, associate professor of religion at Washington and Lee, was formed under the auspices of the John King Fairbank Center for East Asian Research of Harvard University and with a grant from the National Endowment for the Humanities.

Two or three volumes are projected on the theme "Buddhism in Japanese Civilization" as a result of the study.

In addition to Rogers, other members of the research team who took part in the Skylark conference were Masatoshi Nagatomi, project director and professor of Buddhist studies at Harvard University; Robert Lee, professor of religion at Southwestern (Tex.) University; James H. Sanford, assistant professor of religion at the University of North Carolina at Chapel Hill; and, Whalen W. Lai, assistant professor in religious studies and Asian studies at the University of California-Davis.

Several art historians presented papers

Brian Rinehamer

Brian Rinehamer, who would have been a sophomore at Washington and Lee this year, died Aug. 9 as a result of head injuries he sustained in an automobile accident near his hometown of Saint Johns, Pa. He was 19.

A graduate of Hazelton (Pa.) High School, Rinehamer was an honor student, the winner of the Bausch & Lomb Science Award, and a member of both the football and baseball teams.

At Washington and Lee, he was a member of the varsity baseball team and the Pi Kappa Phi social fraternity.

He was the son of Mr. and Mrs. Horace C. Rinehamer of St. Johns, Pa.

during the conference. They included Jonathan Best of Wesleyan University, John Rosenfield of Harvard, Barbara Ruch of the University of Pennsylvania, Elizabeth ten Grotenhuis of Harvard, Laura Kaufman of Manhattanville College, and Yoshiaki Shimizu of the Smithsonian Institution.

The final two conferences conducted by the research team will be held at the University of California at Berkeley and at Harvard.

The Skylark Estate was donated to Washington and Lee in 1977 by Mr. and Mrs. Leslie Cheek Jr. and has been used for a variety of meetings and conferences.

Lawyers hold workshop

Washington and Lee's School of Law served as host in June to a program designed to help practicing attorneys become better trial lawyers.

Twenty-two lawyers from throughout Virginia took part in the Virginia Continuing Legal Education/National Institute for Trial Advocacy, a nine-day program.

James Phemister, associate professor of law at W&L, was one of the two teaching team leaders in the program. The other teaching team leader was Don Beskind of the Duke University law school.

Instruction was given by six practicing trial lawyers and two judges, all of whom volunteered their time and their talents to work in the program.

According to Phemister, the teaching

techniques used in the program are unusual since "the participants learn the techniques by actually using them rather than relying on lectures or having instructors demonstrate techniques."

The program made considerable use of the law school's extensive video tape equipment.

This was the third summer that W&L's law school was host for the trial advocacy program.

376 freshmen enroll in undergraduate school

Washington and Lee enrolled 376 freshmen in September, an increase of slightly more than nine percent over a year ago.

According to statistics compiled by W&L Admissions Director William Hartog, this year's class possesses exceptionally strong academic qualifications.

For instance, 18 Merit Scholarship finalists enrolled, compared with 12 a year ago and with six in 1979.

More than 80 percent of the freshmen graduated in the top two-fifths of their secondary school classes; 47 percent graduated in the top fifth; 20 students were either the valedictorian or salutatorian of their class.

Scholastic Aptitude Test (SAT) scores average 560 verbal and 590 math.

The freshmen represent 291 different secondary schools in 39 states with 61

percent from public secondary schools and 39 percent from private schools.

While the largest contingent of freshmen come from Virginia (69), New York is second with 42 students followed by Maryland with 37, Texas with 34, Pennsylvania with 27, and Florida with 19.

Renovation of the University's Graham-Lees Dormitory has resulted in a change of housing patterns for this year's freshmen, who will be assigned to five dormitories on the campus while 90 students and five upperclassmen counselors are residing at the Robert E. Lee Hotel in downtown Lexington.

Construction on the Graham-Lees complex began in early June and is scheduled for completion in time for the start of the 1982-83 school year.

Freshmen alerted about alcohol dangers

A program designed to alert entering freshmen to the dangers of alcohol abuse was instituted as part of the freshman orientation program at Washington and Lee this fall.

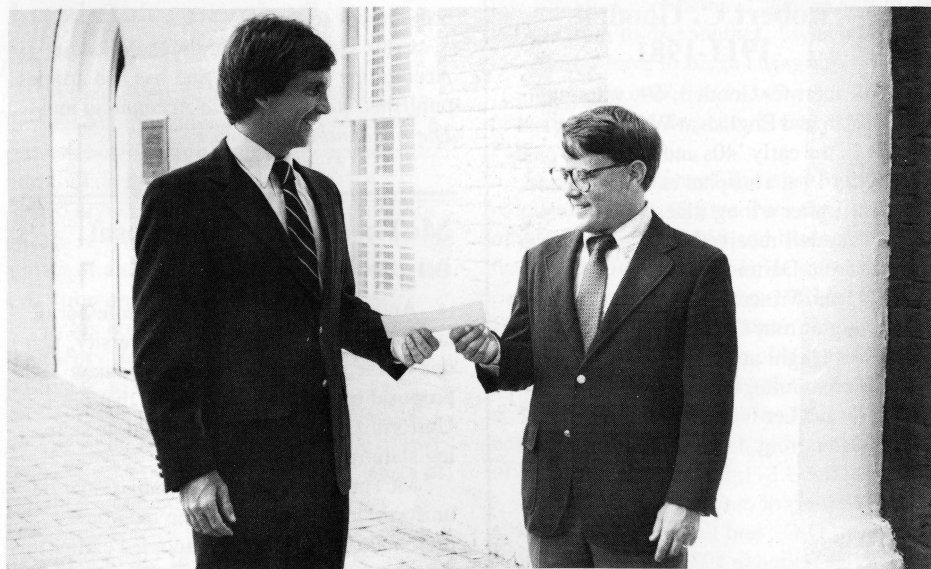
According to H. Robert Huntley, associate dean of students at W&L, information was to be disseminated by way of the dormitory counselors, upperclassmen who supervise and provide guidance for first-year students.

"As part of the standard training sessions we hold for dormitory counselors in early September, we included one unit on alcoholism and emphasized the role the dormitory counselors can play in helping alert freshmen to possible problems," Huntley explained.

The training session for counselors was based, in part, on materials from BACCHUS (Boost Alcohol Consciousness Concerning the Health of University Students), a volunteer student organization chartered on campuses to promote responsible alcohol-related behavior.

The new program was partly the result of a student-conducted study of drinking habits at W&L. The study was recommended by the Student Body Executive Committee, the chief agency of student government at W&L, and was based on a questionnaire answered by half the undergraduate student body (Alumni Magazine, May 1981).

In response to the study, Lewis G. John, W&L dean of students, had said the results "emphasize the need to look for educational programs in the area of alcohol abuse. We felt that freshman orientation was an



Assistant Alumni Secretary L. C. (Buddy) Atkins (right) presents a check for \$3,500—representing accumulated profit from sales of the alumni chair—to Director of Financial Aid Michael D. Bartini. Over the years, alumni chair sales have provided more than \$32,000 to the scholarship fund in memory of John Graham, '14.

appropriate vehicle for such an educational program.”

In addition to materials from BACCHUS, the training session for dormitory counselors included talks on the subject of alcoholism from several specialists in that field.

117 First-year students enter School of Law

Question: what do the following have in common? A school psychologist, a newspaper publisher, an ABC Store manager, a registered nurse with two children, a former member of the Dartmouth College crew, and an orchardist.

Give up?

All are planning careers in law and were among 117 first-year students who began classes at the Washington and Lee University School of Law in August.

According to statistics compiled by the law school, W&L's first-year students come from 29 states and the District of Columbia. They hold undergraduate degrees from 79 colleges and universities.

Those undergraduate institutions with more than three graduates in W&L's first-year law class are Washington and Lee with six, Dartmouth and the University of Virginia with five, and Duke, Le Moyne, and Vanderbilt with four.

The first-year class has 36 women and 81 men.

The grade-point average of the first-year students for their undergraduate careers was an average 3.32. Their scores on the standardized Law School Admissions Test were an average 638.

In recent years, law school admissions officials have noted an increase in the number of students who do not enter law school directly after graduating from college, but choose to take a year (sometimes two or three years) away from their studies before entering law school. That trend continues to be evident in this year's first-year class.

Just less than a quarter (24 percent) of the new law students received their undergraduate degrees in 1980 and waited a year before beginning law school.

Slightly more than half (53 percent) of the first-year students enrolled directly after receiving their undergraduate degrees.

The first-year class also includes a number of "career-switchers"—those people who are leaving full-fledged careers in other fields to take up the study of law. In several instances, the "new" law students have been away from school for as long as 12 years.



Jay D. Cook Jr.

Cook is appointed to Martel Professorship

Jay D. Cook Jr., head of the department of accounting at Washington and Lee, has been named to the Mamie Fox Twyman Martel Professorship by the University's board of trustees.

The Martel Professorship was established in 1956 under the will of Mrs. Martel. The professorship honors the memory of Mrs.

Martel, whose brother, Henry S. Fox Jr., was an 1894 graduate of the University.

E. Claybrook Griffith, former head of the department of economics at W&L, held the Martel Professorship until his retirement in 1980. He is Mamie Fox Twyman Martel Professor of Economics, Emeritus.

The professorship is supported annually by Mamie F. Martel Trust of Houston, which also supports one other professorship at the University—the Henry S. Fox Jr. Professorship currently held by Severn P. C. Duval, professor of English.

Endowed professorships at Washington and Lee are established in recognition of gifts of \$500,000 or more to the University's endowment or to other permanent capital purposes.

Cook has taught at Washington and Lee since 1953. A native of Chester, Pa., he received the bachelor of arts degree in history from W&L in 1943. He later earned his master of business administration degree from the Wharton School of Commerce at the University of Pennsylvania and his Ph.D. degree from Ohio State University.

Prior to joining the W&L faculty, Cook taught for five years at Denison University in Granville, Ohio.

In announcing Cook's appointment to the Martel Professorship, Washington and Lee President Robert E. R. Huntley said that "Professor Cook is one of our most distinguished faculty members, is active on many University committees, is a productive scholar, and an excellent teacher. He will bring honor to the chair as the chair will bring honor to him."

Cook is a member of the American Accounting Association and has had articles published in *The Virginia Accountant* and *The Accounting Review*.

Robert C. Goodell 1911-1981

Robert C. Goodell, 69, who taught German and English at Washington and Lee in the early '40s and mid-'50s, died on July 19 at a hospital in Williamstown, Mass., after a long illness.

Goodell received his bachelors degree from Dartmouth College, his master's from Princeton University, and his doctorate from Columbia University.

He taught at Bowdoin College and Williams College and was on the Washington and Lee faculty from 1941 to 1942 and later from 1954 to 1956. He then joined the U.S. Information Agency and served tours of duty in Germany, Washington, D.C., and London, his last station. He retired in 1973 and moved back to Williamstown in 1980.

He is survived by his wife, Anne; a son, John, and a brother, William.

McThenia drafts proposal on unclaimed property

Andrew W. McThenia Jr., professor of law at Washington and Lee University, is one of the principal architects of a new proposal on unclaimed property that the Uniform Law Commission will urge state legislatures to adopt.

McThenia, a Virginia commissioner on uniform laws, was one of the reporter-draftsmen of the proposal adopted earlier this month at the annual meeting of the Uniform Law Commission (ULC).

The ULC is a confederation of state commissions on uniform laws. The 250 practicing lawyers, judges and law professors

who are ULC members are selected by each of the 50 states, the District of Columbia and Puerto Rico. They draft and urge adoption of legislative proposals designed to solve problems common to all states.

The proposed Uniform Unclaimed Property Act of 1981, which McThenia was instrumental in drafting, deals with property that has been lost or abandoned by its rightful owner. The property ranges from stocks and bonds to utility deposits to parimutuel tickets.

According to the ULC, an astonishing number of Americans deposit money in banks and simply forget about it. Or they buy stock and move without bothering to leave the company a forwarding address for their dividend checks.

As a consequence, billions of dollars lie abandoned in such financial pockets. Often, the rightful owner has died and the heirs are unaware that a windfall could be theirs.

The ULC committee of which McThenia was a member drafted a proposal designed to reunite owners with their property and to streamline its transfer to state custody.

In addition to McThenia, the other reporter-draftsman of the ULC proposal is David J. Epstein, a practicing lawyer in Los Angeles.

McThenia, who received both his undergraduate and law degrees from Washington and Lee, joined the law school faculty in 1967. He teaches courses in contracts, negotiations, and injunctions.

Legal ethics examined in new Shaffer book

In their relationships with clients, lawyers should adopt an "ethics of care," a professional relation marked by openness in moral dialogue.

So argues Thomas L. Shaffer, professor of law at Washington and Lee University and author of a new book entitled *On Being a Christian and a Lawyer*.

In his book, Shaffer takes exception to the theory that "it is necessary, in working with law, to set morals aside."

He notes that prevailing notions about attorney-client relationships take one of two forms: the "ethics of role" or the "ethics of isolation." In the "ethics of role," the lawyer does what the client wants or tells the client to do. In the "ethics of isolation," moral statements are made without significant interpersonal conversation.

Shaffer, former dean of the Notre Dame



Thomas L. Shaffer

law school, believes the law profession should become one in which the lawyer's calling becomes a form of ministry.

Addressing the question of what a lawyer should do when his client wants to perjure himself, Shaffer says that the lawyer should not abandon the client, but should urge him to tell the truth.

Most of the blame for the American legal system's avoidance of moral witness, argues Shaffer, can be placed on law schools, which either avoid moral questions or suggest that there is no discipline in moral discourse. In law school, says Shaffer, "we can still try to tell the truth to one another," which is the way things have to begin changing.

On Being a Christian and a Lawyer is published by the Brigham Young University Press.

Shaffer, a native of Billings, Montana, received his B.A. degree from the University of Albuquerque in 1958 and his law degree from Notre Dame in 1961. He served on the faculty at Notre Dame from 1963 to 1980. He has been visiting professor of law at both UCLA and the University of Virginia and was the Frances Lewis Scholar-in-Residence at Washington and Lee in the fall of 1979 before joining the W&L faculty as professor of law in 1980.

Shaffer is the author or co-author of seven books, including *Death, Property, and Lawyers* (1970); *The Planning and Drafting of Wills and Trusts* (1972, second edition 1979); *Legal Interviewing and Counseling* (1976); and, *Lawyers, Law Students and People* (co-author, 1977).

W&L men on the benches of highest courts

The 1980 Washington and Lee law school directory lists the names of 96 judges, 50 of them serving in Virginia courts. The new alumni directory lists 26 alumni as judges who attended Washington and Lee as undergraduates and then studied law elsewhere. The total number of judges listed in the new directory is 128. Twenty alumni serve in the federal courts or on the highest state courts. The names of the 20 judges are:

Thornton G. Berry Jr., '34L—Supreme Court of Appeals, West Virginia (retired)

Thomas A. Clark, '42—U.S. Court of Appeals, Fifth Circuit of Florida

A. Christian Compton, '50, '53L—Supreme Court of Virginia

Edward S. Delaplaine, '13—Court of Appeals of Maryland (retired)

Charles B. Fulton, '32—U.S. District Court of Florida (senior justice)

Alex M. Harman Jr., '44L—Supreme Court of Virginia (senior justice)

Harold N. Hill, '52—Supreme Court of Georgia

Walter E. Hoffman, '31L—U.S. District Court for the Eastern District of Virginia

J. Robert Martin Jr., '31L—U.S. District Court for the District of South Carolina

John C. A. MacKenzie, '39L—U.S. District Court, Eastern Virginia

Lewis F. Powell Jr., '29, '31L—U.S. Supreme Court

Norman C. Roettger Jr., '58L—U.S. District Court for the Southern District of Florida

John M. Shaw, '53—U.S. District Court of Louisiana

George R. Smith, '32—Supreme Court of Arkansas

Roscoe B. Stephenson Jr., '43, '47L—Supreme Court of Virginia

James C. Turk, 52L—U.S. District Court for the Western District of Virginia

Sol Wachtler, '51, '52L—State of New York Court of Appeals

Harry W. Wellford, '46—U.S. District Court for the Western District of Tennessee

H. Emory Widener, '53—U.S. Court of Appeals for the Fourth Circuit of Virginia

John M. Wisdom, '25—U.S. Court of Appeals for the Fifth Circuit of Louisiana

Corrections and additions should be called to the attention of Rupert N. Latture, Washington and Lee University, Lexington, Virginia 24450.

Perry joins Admissions staff

Michael J. Perry has been named to the position of Admissions Counselor at Washington and Lee.

Perry, a 1981 W&L graduate, replaces Biff Martin, who will enter graduate school at Northwestern University this fall.

A native of Belle Mead, N.J., Perry majored in economics at W&L. He will be involved in all areas of the admissions program at W&L, including extensive travel to visit with prospective students in secondary schools and on-campus interviewing of prospects.

W&L business office announces changes

Changes in the organization of the Washington and Lee University business office were announced in August by E. Stewart Epley, the University's treasurer.

William R. Morrison, formerly Chief Accountant, has been named Director of Accounting.

Donald G. Holt, formerly Accountant, has been appointed Senior Accountant.

Janice H. Bell, formerly General Accountant, has been named Business Office Supervisor.

Morrison, a Lexington native, joined the Washington and Lee business office in 1972. He was previously employed by the BARC Electric Cooperative in Millboro, Va.

Holt came to Washington and Lee in 1976 from The H. O. Canfield Co. in Clifton Forge, Va. He is a native of Buena Vista.

Mrs. Bell joined the W&L staff in 1980 after three years at American Federal Savings and Loan Association in Lexington. She is a native of Waynesboro.

Reveley is appointed second Howerton Scholar

Walter Taylor Reveley, President Emeritus of Hampden-Sydney College, will be Washington and Lee University's second scholar-in-residence under the Philip Fullerton Howerton Endowment Fund in W&L's department of religion.

Reveley, who served as Hampden-Sydney's president from August 1963 to June 1977, will be Visiting Professor of Religion for the fall term at W&L under the Howerton program.

An ordained minister in the Presbyterian



Walter Taylor Reveley

Church of the U.S., Reveley was Millard Professor of Bible at Southwestern at Memphis before being named Hampden-Sydney's 18th president in 1963. After leaving the presidency in 1977, Reveley spent one year at Fitzwilliam College of Cambridge University and then returned to Hampden-Sydney as professor of religion for three years.

At Washington and Lee, Reveley will teach a course in Old Testament.

Reveley received his bachelor of arts degree from Hampden-Sydney, his bachelor of divinity degree from Union Theological Seminary, and his Ph.D. degree from Duke University. He has been awarded honorary doctorates from Southwestern at Memphis and the College of Charleston.

The Philip F. Howerton Fund at W&L was established by Mr. Howerton's widow, Mrs. Emmie Howerton of Charlotte, N.C.

Philip Howerton, who died 13 years ago, was moderator of the Presbyterian Church of the U.S. (Southern) in 1957 and was a prominent insurance executive in Charlotte. He was nationally known as a lecturer in religion and in life insurance.

His father was professor of religion and philosophy at W&L from 1907 until his death in 1924 and preceded Philip Howerton as moderator of the Presbyterian Church by 50 years.

Mrs. Howerton established the fund in memory of her husband to stimulate an increased examination and understanding of the worth of religious faith in contemporary society and to reinforce Washington and

Lee's commitment to what Robert E. Lee once termed "the very marrow of the Gospel."

James Takashi Yashiro, dean and professor of church history at Rikkyo University in Tokyo, Japan, served as the first Howerton Scholar-in-Residence during the 1980-81 academic year.

New faculty

Eleven undergraduate teachers and two in law joined the Washington and Lee faculty in September.

New teachers in the College, W&L's arts and sciences division are:

Anthony F. Orchard, visiting professor of chemistry, who will be at W&L for the fall term only under the University's exchange program with the University of Oxford in England. Orchard is lecturer in inorganic chemistry at the University of Oxford and praelector in chemistry at University College;

Wayne M. Dymacek, assistant professor of mathematics, who was a mathematician with the Department of Defense before joining the W&L faculty;

Steve R. Gordy, assistant professor of religion, a Ph.D. candidate at Vanderbilt University. Gordy takes the place this year of Harlan Beckley, assistant professor of religion, who is on a one-year leave from teaching in 1981-82.

Douglas N. Leonard, assistant professor of English, who received his Ph.D. from the University of Wisconsin in August;

Steven E. Olson, assistant professor of English, who will receive his Ph.D. from Stanford University this fall;

Richard Oram, assistant professor and reference and public services librarian in the University Library, who had worked as manuscripts cataloguers at the Humanities Research Center of the University of Texas where he received his master's degree in library science.

William M. S. Rasmussen, a 1968 graduate of Washington and Lee is coordinator of education services of the Virginia Museum of Fine Arts in Richmond. Rasmussen will be assistant professor of art.

Marshall Kirkland Follo, a 1968 graduate of Washington and Lee, who becomes instructor in German;

Paula Langdon, instructor in drama, who has worked with the Nebraska Theatre Caravan as an actress and teacher.

The two new faculty members in the School of Commerce, Economics and Politics are:

Craig McCoughrin, assistant professor of political science at the University of Pennsylvania, who will be associate professor of politics at W&L;

David N. Weist, assistant professor of accounting, who has been a teaching assistant at the University of Virginia's

McIntire School of Commerce.

The School of Law also has two new teachers. They are:

Richard B. Tyler, professor of law at the University of Missouri law school, who will be visiting professor of law at W&L;

Steven H. Hobbs, assistant professor of

law, who was law clerk for the New Jersey Department of the Public Advocate before joining the W&L faculty this fall.

ROTC names faculty

Three new staff members have joined the faculty of Washington and Lee University's Military Science Department.

Maj. David F. Fowler Jr. is W&L's new Professor of Military Science and head of the department.

New assistant professors of military science are Maj. John Mears and Capt. Bayard T. Keller Jr.

Fowler, a graduate of the University of Nebraska at Omaha with a master's degree from Wichita State University, has served in a variety of command and instructor positions. He served two tours of duty in Vietnam and an additional tour of duty in Europe. His positions have included command of an Armored Cavalry unit in combat; command of a Division Headquarters Company; command of an Advisory Support Group; command of a Criminal Investigation District; and, service as an instructor in Armored Cavalry tactics.

Fowler replaces Col. Thomas B. Vaughn, who is now attending Army War College in Carlisle, Pa.

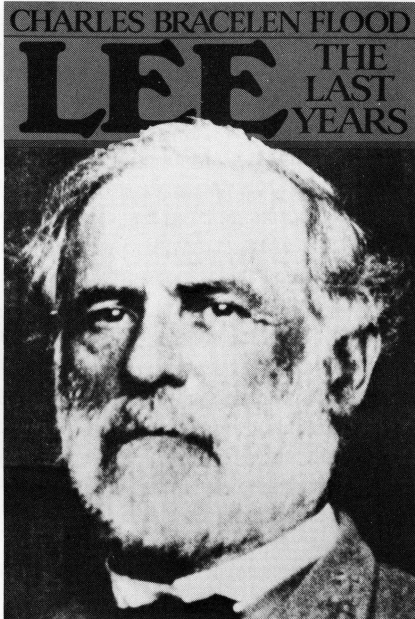
Mears, who was commissioned through the ROTC program at the University of Dayton, is an Air Defense Artillery Officer with 13 years experience.

Keller, who was commissioned through the ROTC program at Stetson University, has recently served with the Air Defense Artillery Training Battalion at Fort Bliss in El Paso, Texas.

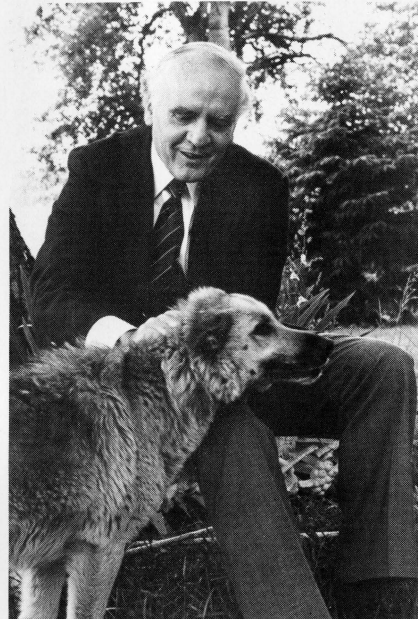
Faculty activity

—Halford R. Ryan, associate professor of public speaking, participated in a two-month seminar at Ohio State University over the summer. The seminar, "Rhetoric and Public Discourse," examined speeches of U.S. presidents Franklin Roosevelt, William Taft, Harry S. Truman, and Richard Nixon, among others. Ryan has recently written an article, "Harry S. Truman: A Misdirected Defense for General MacArthur's Dismissal," for *Presidential Studies Quarterly*.

—Sarah K. Wiant, head law librarian at Washington and Lee, has been named to the board of directors of the American Association of Law Libraries, a 3,000-member organization that includes librarians



The book



Charles Bracelen Flood

Bookstore reception to honor author of new book on Lee

Lee: The Last Years, a new book on Robert E. Lee that deals principally with Lee's presidency of Washington College (now Washington and Lee University) and his role as the prime healer of the bitterness between North and South after the Civil War, will be published by Houghton Mifflin Co. on Oct. 30.

And on that day, the author, Charles Bracelen Flood, will be at the Washington and Lee Bookstore to autograph copies of the book for purchasers. The reception and autograph party honoring the author and the book coincides with Parents' Weekend at Washington and Lee.

Flood spent many days on the Washington and Lee campus doing research for the book, which contains 12 pages of black and white photographs, many of them from the University's collections.

Lee: The Last Years is being hailed by advance reviewers as an invaluable contribution to the body of Lee scholarship. Lee's final achievements as an innovative educator and a national conciliator of immense influence are now recognized as "his finest

hour, the great forgotten chapter of an extraordinary life."

One reviewer called the book "a masterpiece of narrative biography" and Theodore H. White commented: "Tragic and powerful, with the rhythm of a classic, the stupendous research subordinated to the emotion it evokes, it is the end of the story for which we have been waiting over a century."

Flood, a resident of Richmond, Ky., is the author of nine books, including the best-selling *Love Is a Bridge; More Lives Than One*, a Literary Guild selection; and *Rise and Fight Again*, winner of the American Revolution Round Table Award.

Lee: The Last Years, autographed by the author on Oct. 30, may be ordered from the Washington and Lee Bookstore at \$14.95 per copy (the price includes handling and shipping via UPS and represents a 10% discount for W&L alumni). Make checks payable to the Washington and Lee Bookstore.

Send your order to Washington and Lee Bookstore, Lexington, Virginia 24450.

who serve the legal profession in courts, bar associations, private law firms, and federal, state and county governments in addition to law schools.

—Frederic L. Kirgis Jr., professor of law and director of the Frances Lewis Law Center, has recently published a 1981 supplement to his book, *International Organizations in Their Legal Setting: Documents, Comments and Questions*.

—James M. Phemister, associate professor of law, served this summer on a panel that examined some recent Supreme Court decisions. The panel was part of the 51st Judicial Conference for the United States Circuit and District Courts for the Fourth Circuit. The conference was held at The Homestead in Hot Springs, Va.

—Clark R. Mollenhoff, professor of journalism, was a panelist for a seminar at the Virginia Bar Association's 91st annual summer meeting in July. The panel examined the relationship between the news media and the law profession. Mollenhoff, former Washington bureau chief for the Des Moines *Register and Tribune*, holds a law degree from Drake University and is adjunct professor of law in Washington and Lee's School of Law.

—Frederic L. Schwab, professor of geology, is the author of an article in the *Journal of Geology*. In his article, Schwab evaluated the validity of evolutionary models proposed for the Western Alps based upon his examination of the mineralogy and chemical composition of modern ocean basin and continental margin sediment.

—Louis W. Hodges, professor of religion and director of W&L's Program in Applied Ethics, was a member of the faculty for the Hastings Center Workshop on Ethics and the Professions, which was held at Colorado College this summer. Hodges had previously served on the workshop faculty in 1979 and 1980.

A symbol of sharing between two different men

The following article by Kent Bernhard, editor of the *Charlotte (N.C.) News*, appeared in the May 30 issue of that newspaper and is reprinted here with permission.

William Anderson Epperson Jr., of Suffolk, Va., is a sophomore at Virginia's Washington and Lee University, where he is majoring in physics-engineering.



Epperson's drawing

Oliver Rowe, '78, chairman of the board of the Rowe Corp., for years has been a prominent member of Charlotte's business and civic community, honored and respected by hundreds of friends and acquaintances in his hometown.

On the surface, the two men would seem to have little in common with one another. Separated by hundreds of miles and by several generations, each could be expected to go about his own life, essentially unaware of the other, and each being the poorer because of that separation.

But a picture—a charcoal sketch of a little boy—has changed that, leading to a contact between the two men that reminds us that chance encounters between people are sometimes among the most memorable.

The story begins a few months ago, when Rowe went to Washington and Lee to address a conference hosted by the campus chapter of the Chi Psi fraternity, which counted Rowe as a member during his undergraduate days at the University of North Carolina. Although he has been slowed a bit in recent months by a minor stroke, Rowe agreed to attend the conference because of his continued interest in the fraternity and in making the acquaintance of bright, young people.

While visiting the Washington and Lee campus, Rowe happened upon a sketch

hanging on the wall of a fraternity house. The framing and the mounting were not professional; the setting had little to commend the picture.

"But I noticed it while I was walking through the hall," Rowe said in recalling the experience. "I stopped and turned around. And the picture struck me. I thought it was wonderful. It said so much to me."

The next day, as Rowe was preparing to leave the campus, several Chi Psi brothers had gathered around Rowe's car to say goodbye when Skip Epperson stepped through the crowd carrying the picture of the little boy he had drawn.

"He said he understood that I had liked the picture and that he's like me to have it," said Rowe. "I was very touched."

Epperson has had no formal training in art. A student in a highly technical field, he sketches for his own relaxation and enjoyment. Rowe professes to have little knowledge of the arts, although the creative arts department at the University of North Carolina at Charlotte is housed in a building that bears his name, and although he has long been a partisan of the Charlotte Symphony.

Rowe came back to Charlotte, convinced that the picture of the little boy was a treasure, and convinced that young Skip Epperson deserved public recognition for the talent that Rowe saw exhibited in the sketch.

"The more I looked at that picture, the more it impressed me," said Rowe. "Particularly because the young man who drew it has had no training in the arts. To me it shows a great, great talent.

"The little boy in the picture is perfect. The eyes . . . the eyes . . . say everything.

"People deserve to see the picture."

Rowe took the picture to Dr. Joseph Spence, who heads the creative arts department at UNCC. Very carefully, the school remounted it with professional expertise and put the sketch in a frame.

Spence agrees that the picture is intriguing.

"It's quite exceptional, considering that the person who drew it has limited training," says Spence. "The essence of humanity is shown in the drawing. It conveys much more than just a representation of a small boy."

In the next few weeks, the picture will be hung in the Rowe Building at UNCC. For those who stop by to look at it, they'll indeed see more than a representation of a small boy.

They'll also see a symbol of sharing between two different men with two different lives.

CHAPTER NEWS

NEW YORK. On June 10 the chapter in conjunction with the Virginia Council of Colleges, a group of Old Dominion colleges in New York, sponsored a boat trip around Manhattan Island. The three-hour cruise on the Circle Line boat was a sell-out of some 500 participants of which approximately 25% were Washington and Lee alumni and guests. The passengers, who brought their own picnic supper and refreshments, were entertained with stereo music which led to college singing, merriment, and dancing. David Dowler, '70, served on the steering and arrangements committee for W&L. It is anticipated that the boat party will become an annual affair.

RICHMOND. The second annual W&L-Hampden-Sydney Golf Tournament was held on June 11 at the Hermitage Golf Club. Washington and Lee won the event and Will Scott, '75, had the lowest net score for W&L. At the trophy award ceremony beer and pretzels were served. Participants expressed a hope to hold a similar event next year.

BIRMINGHAM. Recent chapter events have included a cocktail party and picnic hosted by Mrs. John (Milo) Hendon at her home. Guests were served beer and chicken barbecue by Chef Bill Schooley, '78, and enjoyed badminton, horseshoes and lacrosse. Prizes were awarded in the guest golf tournament to those who came closest to the hole. President Charles Perry, '73, expressed the appreciation of the chapter to Mrs. Hendon. On July 12 the chapter's softball team defeated Sewanee 27-26. Coach Hatton Smith, '73, did a great job of handling 21 physically deteriorated but high spirited team members.

SAN DIEGO. Dr. Max Elliott, '60, and his wife, Melissa, were hosts for the chapter sunset cocktail party on the beach at the LaJolla Beach and Tennis Club on June 14. A gentle desert breeze provided clear skies and a beautiful sunset for the 30 alumni and guests who enjoyed the bar and hors d'oeuvres.

JACKSONVILLE. The chapter held its annual social hour and business meeting at



BIRMINGHAM—Victorious softball players (front row) are Jim Nolan, '74; Brad Kidd, '73; Hatton Smith, '73; Charles Perry, '73; (standing) John McNeil, '71; David Proctor, '81; Dr. John Poyner, '62 (hidden); Duncan Pace, '74; Billy Wells, '75; Sandy Stradtman, '77; Mel Dugan, '80; Billy Hiden, '75; Leake Wornom, '77; Mark Hoffman, '77; Crawford William, '69; Johnny Scruggs, '77; Bill Schooley, '78; Julie Webb (cheerleader); Kim Ratliff, '76; Holman Head, '78. (Not pictured: Alex Nading, '71, and Stark Sydnor, '66, '73L.)



JACKSONVILLE—New chapter officers are Lee Redmond, '74, secretary-treasurer; Hap Stein, '74, president; and Jerry Weedon, '70, vice president.

the Seminole Club on June 16. Hal Catlin, '72, presided over the meeting. Assistant alumni secretary, Buddy Atkins, '68, gave a brief update report on events at Washington and Lee then answered numerous questions

from the floor. The final order of business was the election of officers for the coming year. They are: Hap Stein, '74, president; Jerry Weedon, '70, vice president; and Lee Redmond, '74, secretary-treasurer.

RECORD ANNUAL FUND

Giving In Support of Operating Expenses Reaches All-Time High of \$1,170,941

Propelled by the generosity of alumni, parents, and friends and by the hard work of volunteer Class Agents, Washington and Lee's 1980-81 Annual Fund reached new highs in several categories, including the final total.

Unrestricted gifts toward the University's day-to-day operating expenses amounted to a record net of \$1,170,941, an increase of 12 percent over last year's net of \$1,045,076, the previous all-time high.

Other 1980-81 records:

—Total number of contributors: 6,266, an increase of 251 over last year.

—Average gift of \$189, compared with \$177 last year.

—Number and total amount of gifts at the Lee Associates level (\$1,000 or more): 367 gifts totaling \$615,676, up from 319 and \$540,946 last year.

—Number and total amount of gifts at the Colonnade Club level (\$100 to \$999): 2,591 gifts totaling \$500,018, up from 2,406 and \$423,974 last year.

The average Lee Associate gift was \$1,678 and the average Colonnade Club gift was \$193. Together members of the Lee Associates and Colonnade Club gave \$1,115,694—94 percent of the fund total—and made up 47.3 percent of all fund contributors.

Total gifts to the 1980-81 fund exceeded the goal by nearly \$71,000 and provided more than 8.5 percent of the University's operating budget.

Reunion classes—the academic and law classes of '31, '36, '41, '46, '51, '56, '61,



'66, '71, and '76—achieved outstanding results in increasing their gifts over the previous year. The reunion academic classes (including '46 law) increased their giving by 40.8 percent to \$166,386, compared with \$118,136 in 1979-80, and the reunion law classes gave \$39,494, an increase of 60.5 percent. Combined, the reunion classes increased their gifts by 44.2 percent for a total of \$205,880 against \$142,746 the previous year.

The University counts toward its annual fund only gifts actually received by June 30, the close of the fund year, and does not

include restricted or capital gifts. (The 1980-81 net total was reached by deducting \$16,018 in unpaid pledges at the end of the fund year; many of these pledges have been paid since June 30 and will be applied to the 1981-82 fund.)

James W. McClintock III, '53A, was chairman of the 1980-81 Annual Fund and also Academic Alumni chairman; William F. Ford, '61L, was Law Alumni chairman; Ralph Kemp was Current Parents chairman, and W. M. Kempe was Past Parents chairman; Guy T. Steuart II was Robert E. Lee Associates chairman.

REPORT OF THE ANNUAL FUND June 30, 1981

		Donors	Dollars	% Part.	Avg. Gift
Academic Alumni	80-81	4,756	\$ 903,050	37.0	\$190
	79-80	4,600	\$ 822,418	36.5	\$179
Law Alumni	80-81	972	\$ 151,687	42.4	\$156
	79-80	873	\$ 124,620	39.6	\$143
Current Parents	80-81	283	\$ 58,979	23.0	\$208
	79-80	330	\$ 55,050	24.7	\$167
Past Parents	80-81	166	\$ 62,516	27.2	\$377
	79-80	163	\$ 41,542	22.4	\$255
Friends	80-81	89	\$ 10,727	—	\$121
	79-80	49	\$ 21,856	—	\$457
TOTALS	80-81	6,266	\$1,186,959	36.9	\$189
	79-80	6,015	\$1,065,486	35.6	\$177

CURRENT PARENTS—Ralph Kemp, Chairman

Area	Area Chairman	Donors	Dollars	% Part.
I	H. A. Baumgaertner	62	\$ 6,568	38.3
II	G. T. Alfano	42	4,295	27.6
III	F. K. Turner	38	6,705	29.7
IV	G. LeCuyer	22	4,790	11.7
V	F. K. Saunders	18	2,285	14.9
VI	R. H. Park	30	6,847	16.6
VII	W. K. Christovich	20	8,222	20.4
VIII	R. G. Sheldon	27	5,858	25.7
IX	T. B. Rentschler	24	7,385	26.1
X	At Large	1	6,024	—
Total		283	\$58,979	23.0
PAST PARENTS—W. M. Kempe, Chairman				
	W. M. Kempe	166	\$62,516	27.2

THE ANNUAL FUND BY CLASSES—1980-81

ACADEMIC CLASSES—J. William McClintock III, Chairman

Class	Class Agent	Donors	Dollars	% Part.
GROUP I-A—W. C. Washburn, Vice Chairman				
All Other	W. C. Washburn	23	\$ 9,010	32.9
12A	W. L. Webster	7	1,400	70.0
13A	E. S. Delaplaine	1	200	11.1
14A	A. W. McCain*	7	481	58.3
15A	R. N. Latture*	9	3,500	60.0
16A	E. B. Shultz	3	675	30.0
17A	W. J. Cox*	10	3,980	58.8
18A	A. Beall	9	2,970	40.9
20A	J. G. Evins	10	1,275	33.3
21A	S. L. Raines	6	400	42.9
23A	F. B. Hurt*	24	3,553	44.4
24A	R. M. Jenkins*	26	6,427	37.1
TOTAL		135	\$ 33,871	40.5
GROUP II-A—H. G. Jahncke, Vice Chairman*				
25A	E. T. Andrews*	27	\$ 8,378	33.8
26A	T. T. Moore*	30	7,791	40.0
27A	G. E. Burks*	39	6,872	41.1
28A	P. Cohen*	49	20,521	57.0
29A	T. G. Gibson*	44	13,215	41.5
30A	L. P. Brown	62	18,315	55.9
31A	S. Sanders*	72	35,776	53.7
32A	E. P. Martin*	66	6,982	48.5
TOTAL*		389	\$117,850	47.3
GROUP III-A—J. E. Neill, Vice Chairman				
33A	C. J. Longacre	53	\$ 13,530	41.1
34A	S. Mosovich	78	12,750	54.9
35A	N. J. Rahall	59	6,220	45.4
36A	G. W. Harrison	77	17,596	53.1
37A	D. R. Moore	62	13,510	37.3
38A	S. N. Baker*	76	27,400	48.1
39A	H. P. Avery	69	20,063	33.5
TOTAL		474	\$111,069	44.1
GROUP IV-A—E. R. Marable, Vice Chairman				
40A	T. E. Bruce	81	\$ 71,448	51.6
41A	A. T. Fleishman	71	14,404	36.2
42A	N. H. Brower	78	22,530	40.6
43A	A. D. Darby	90	17,989	44.6
44A	G. T. Wood	75	14,934	43.9
45A	M. M. Hirsh*	60	17,537	43.8
46A	D. S. Hillman	52	11,046	40.3
47A	W. G. Merrin	28	5,426	39.4
48A	H. R. Gates*	26	8,067	31.7
49A	M. W. Saur	91	19,187	47.4
TOTAL		652	\$202,568	42.6
GROUP V-A—C. D. Hurt Jr., Vice Chairman				
50A	W. N. Clements*	101	\$ 21,593	33.3
51A	J. B. McCutcheon	108	23,992	46.4
52A	D. M. Murray*	98	19,155	43.8
53A	L. A. Putney*	92	18,081	41.6
54A	F. A. Parsons*	63	28,293	28.9
55A	R. N. Fishburn*	58	15,665	29.3
56A	W. H. Houston	79	13,920	33.8
57A	J. B. Howard	78	13,978	36.4
58A	V. W. Holleman*	79	20,571	32.9
59A	T. B. Bryant*	98	16,318	45.0
TOTAL		854	\$191,566	37.1
GROUP VI-A—P. A. Agelasto III, Vice Chairman*				
60A	L. B. Allen	81	\$ 17,480	33.6
61A	E. B. Olds	95	16,477	42.2
62A	W. D. Outman*	105	17,542	39.6
63A	G. O. Thornhill	92	10,927	32.6
64A	C. H. Sheild*	121	16,563	42.5
65A	J. W. Jennings*	116	14,540	43.1
66A	J. D. Humphries*	109	13,345	35.0
67A	W. H. Jeffress	112	10,140	39.2
68A	C. H. Capito*	110	14,321	36.3
69A	M. L. Halford*	137	17,545	42.9
TOTAL*		1,078	\$148,880	38.7
GROUP VII-A—G. A. Frierson III, Vice Chairman				
70A	J. A. Meriwether	104	\$ 14,809	30.3

71A	R. E. Minor	122	12,070	37.5
72A	S. W. Robinson	99	10,514	29.7
73A	G. A. Frierson	117	9,860	31.5
74A	W. P. Wallace	109	6,974	29.9
75A	J. V. Baird*	117	17,882	33.9
76A	J. L. Keiger	124	7,760	32.2
77A	T. Atwood	86	4,330	23.3
78A	J. L. Bruch*	116	5,440	31.4
79A	C. S. Jones*	98	4,785	26.1
80A	P. C. Cornett*	80	2,792	19.3
TOTAL		1,172	\$ 97,216	29.3

LAW CLASSES—W. F. Ford, Chairman

Class	Class Agent	Donors	Dollars	% Part.
GROUP I-L—W. C. Washburn, Vice Chairman*				
All Other	W. C. Washburn*	27	\$ 6,875	33.8
23L	W. W. Ogden	3	1,250	37.5
26L	R. O. Bentley*	4	500	80.0
29L	S. C. Strite	3	400	25.0
TOTAL*		37	\$ 9,025	35.2
GROUP II-L—M. P. Burks III, Vice Chairman*				
30L	L. H. Davis	6	\$ 960	60.0
31L	M. M. Weinberg*	11	12,400	78.6
32L	M. P. Burks	12	3,910	63.2
33L	F. R. Bigham*	12	1,500	70.6
34L	S. W. Wise	9	5,375	52.9
35L	W. W. Fowlkes	8	3,300	57.1
36L	W. L. Martin	5	400	45.5
37L	J. Arnold	11	3,195	61.1
38L	H. E. Wilson*	8	3,725	53.3
39L	E. L. Smith*	23	1,860	74.2
40L	O. B. McEwan*	9	6,144	45.0
41L	J. E. Perry*	15	3,660	62.5
42L	R. O. McDonald	8	1,300	25.0
TOTAL*		137	\$47,729	56.6
GROUP III-L—M. T. Herndon, Vice Chairman				
48L	C. R. Allen	33	\$ 4,780	45.2
49L	J. B. Porterfield*	26	6,798	38.2
50L	W. J. Ledbetter	25	4,578	54.3
51L	S. H. Shott	34	4,540	45.9
52L	J. C. Reed*	25	5,105	50.0
53L	R. L. Banse	8	875	24.2
54L	D. R. Klenk*	17	2,790	60.7
55L	R. W. Hudgins	10	1,150	27.8
56L	C. L. Forbes	6	1,252	28.6
57L	O. P. Pollard*	17	6,928	53.1
58L	R. E. Stroud	10	2,085	38.5
59L	J. F. Richards	10	2,735	29.4
TOTAL		221	\$43,616	42.4
GROUP IV-L—H. V. White Jr., Vice Chairman				
60L	I. N. Smith	15	\$ 2,701	40.5
61L	H. M. Bates*	18	9,778	45.0
62L	C. D. Broll	14	1,478	35.9
63L	L. Sargeant	13	1,688	36.1
64L	R. K. Morton	22	1,852	44.9
65L	L. G. Griffiths	19	1,450	41.3
66L	C. G. Johnson*	28	2,725	56.0
67L	J. C. Treadway	18	2,845	32.7
68L	M. L. Lowry	28	3,310	38.4
69L	D. D. Redmond*	31	2,375	43.1
TOTAL		206	\$30,202	41.4
GROUP V-L—J. S. Kline, Vice Chairman*				
70L	R. A. Vinyard*	23	\$ 2,450	46.0
71L	H. W. Walker*	20	1,520	34.5
72L	H. L. Handley	20	1,540	28.2
73L	M. H. Squires*	47	2,645	47.5
74L	L. H. Framme*	37	2,748	42.0
75L	C. J. Habenicht	26	1,285	32.9
76L	J. L. Spear	44	3,219	55.7
77L	D. M. Thomas*	37	1,265	45.7
78L	D. Swope*	31	1,508	40.3
79L	J. F. Murphy*	47	1,725	37.0
80L	J. K. Boyden*	39	1,210	33.1
TOTAL		371	\$21,115	40.0

*Met or exceeded goal

CLASS NOTES



WASHINGTON AND LEE ARM CHAIRS AND ROCKERS *With Crest in Five Colors*

The chairs are made of birch and rock maple, hand-rubbed in black lacquer (also available by special order in dark pine stain; see note below). They are attractive and sturdy pieces of furniture and are welcome gifts for all occasions—Christmas, birthdays, graduation, anniversaries, or weddings. All profit from sales of the chair goes to the scholarship fund in memory of John Graham, '14.

Note Change in Rocker: A new, more comfortable, and better looking rocker is now offered. The seat has been raised to "chair height"; the back spindles are "steam bent" and lance shaped; new leg turnings and redesigned arms add to its appeal.

Now Available: A child's Boston Rocker in natural dark pine stain, with the crest in gold. Price \$55.00

By Special Order Only: The Arm Chair and Boston Rocker are also available by special order in natural dark pine stain, with crest in five colors, at the same price as the black arm chair and rocker. Allow at least 12 weeks for delivery.

ARM CHAIR, Black Lacquer with Cherry Arms, \$120.00 f.o.b. Lexington, Va.

BOSTON ROCKER, All Black Lacquer, \$105.00 f.o.b. Lexington, Va.

CHILD'S BOSTON ROCKER, Natural Dark Pine Stain, \$55.00 f.o.b. Lexington, Va.

Mail your order to
WASHINGTON AND LEE ALUMNI, INC.
Lexington, Virginia 24450

Shipment from available stock will be made upon receipt of your check. Freight charges and delivery delays can often be minimized by having the shipment made to an office or business address. Please include your name, address, and telephone number.

1924

THE REV. A. EMBERSON JOHNSON of Staunton, Va., retired in July after 52 years as a Presbyterian minister. He was an active minister for 43 years and a supply minister for 9 years.

1925

CARY A. MOOMAW is now working in a licensed home for adults in Roanoke, Va. He retired from public works in 1961 after working for many years in the construction business in Brazil, Argentina, Iraq and Iran as well as in this country.

1928

DR. LESTER A. BROWN continues to work full time in private practice. He was promoted to clinical professor in surgery for ear, nose, and throat at Emory University School of Medicine.

1929

WILLIAM F. CHANDLER, retired president of Porter Coatings Division of Porter Paint Co. in Louisville, Ky., is active in the Episcopal Church Diocese of Kentucky. He still plays in senior golf tournaments.

1931

DR. LUTHER W. KING has continued his studies and recently earned his Ph.D. degree from Columbia University in New York.

1933

J. FRED COOK is now operating the Cook Land Co. in Waynesboro, Va. He taught distributive education for nine years and prior to that was in the retail hardware business for 30 years.

A. P. THOMSON is owner and operator of Golden Acres Orchard in Front Royal, Va. Unlike most modern commercial orchardists, Thomson has never used any "agribiz" chemical on his 35-acre farm. The orchard produces seven different varieties of organically grown apples in addition to unfiltered apple juice and apple cider vinegar. His products are marketed primarily through mail order. In 1979 Thomson founded an organization called Friends of the Farm which has already opened several demonstration sites across the country to give people an opportunity to learn the techniques of organic food production from actual working operations.

1935

E. W. (ED) CHAPPELL JR. retired after over 44 years with E. I. duPont Co. He now serves as a consultant for a small locally owned industrial equipment sales company in Chattanooga, Tenn. Chappell is a member of the Georgia-Tennessee Regional Health Commission and is on the advisory board of the Hamilton County Health Department. He is also active in the Boy Scout program as a merit badge counselor.



Arthur Basile, '39; Robert Basile, '38; David Basile, '36



S. H. Lockett, '46



F. Love Jr., '50

1936

The Ring-tum Phi of Oct. 18, 1935, carried a picture of three brothers, ARTHUR BASILE, '39, ROBERT BASILE, '38, and DAVID BASILE, '36, who were then freshman, sophomore, and senior respectively. The student newspaper said that they were "the first trio of brothers to be registered in the University for several years." Recently the Basile brothers were photographed again in the same order. (See picture above). Arthur Basile is a Baptist minister in Milwaukee; Robert Basile is professor emeritus of geography at the University of Toledo; and David Basile is professor emeritus of geography at the University of North Carolina at Chapel Hill.

HARRY J. BREITHAUPJT JR. recently retired as vice president for law of the Association of American Railroads. He expects to devote the foreseeable future to management of personal investments.

CHARLES B. CROSS JR. of Chesapeake, Va., is the author of a book, *A Navy for Virginia*, which is to be published this summer by the Virginia Independence Bicentennial Commission.

DR. G. ROGER MYERS, has retired after 40 years in medical practice. He lives in Coronado, Calif.

1937

ROBERT V. COLE has retired from Union Carbide and lives in Hudson, Ohio.

1938

DR. ROBERT M. BASILE, professor of geography at the University of Toledo, retired June 12 and was named professor emeritus. Basile joined the UT faculty in 1969. He was on the faculties at Ohio State from 1950 to 1969; Iowa State, 1946-47, and Northwestern Oklahoma State 1940-43. Basile was instrumental in the installation of a weather station at the University of Toledo, making it one of the first Ohio educational institutions with such a teaching device for meteorology and climatology.

AL SHERMAN has completed 35 years of teaching at the University of Bridgeport (Conn.). He is retired from the U.S. Naval Reserves with the rank of lieutenant commander.

ROBERT M. WHITE II, editor and publisher of the *Evening Ledger* in Mexico, Mo., and a former member of the W&L Alumni Board of Directors, gave an address before the Missouri Public Expenditure Survey at their annual meeting in Kansas City on May 13. The address was entitled "The Press and Your First Amendment Rights." The Public Expenditure Survey is an organization of Missouri businesses dedicated to more responsible public expenditure.

1939

During 1980 W. A. (ART) BEETON was acting administrator and director of personal and public relations for the Stonewall Jackson Hospital in Lexington, Va.

HAROLD L. FENTON JR. retired October 1, 1980, after 41 years of service with Anaconda Industries. He travels extensively and was recently in New Zealand and Australia with a stop-over in Tahiti. He resides in Waterbury, Conn.

JOHN L. HAWKINS II is executive director of Towing and Recovery Association of America with offices in Winter Park, Fla.

JOHN A. PARKINS retired on Dec. 31, 1980, from the Polymer Products Division of E. I. duPont in Wilmington, Del.

THE REV. ELLISON A. SMYTH was elected pastor emeritus of the Blacksburg (Va.) Presbyterian Church having served from 1948 to 1968. It was the longest tenure held by any pastor of that church.

ARTHUR BASILE (See 1936.)

1941

ROBERT H. ADAMS has retired from the U.S. Department of Defense, Weapons Systems Evaluation. He now resides in Kilmarnock, Va.

WILLIAM L. (BILL) EVANS JR. retired September 1980 from American Airlines after 38 years as a pilot. Since retirement he has been practicing law. In addition Evans, with two partners, has organized an international freight airlines to be known as North American Airlines. Evans, with several domestic contracts already in force, expects to receive international certification before the close of 1981.

CHARLES LANDRUM of Lexington, Ky., has been elected president of the Kentucky Bar Association.

GEORGE MURRAY JR. is with the Atlanta food brokerage firm of Murray-Hett Brokerage Co., Inc.

1942

CLARENCE L. TARDY has been named by the Secretary of Agriculture as deputy administrator of state and county operations for the Agricultural Stabilization and Conservation Service. In this position Tardy will be responsible for supervising the administration of Federal farm programs through ASCS offices in all states and Puerto Rico. Tardy is owner and operator of a multiple farming operation of approximately 1,300 acres in Rockbridge County, Virginia. Tardy was eastern regional director of ASCS from 1976 to 1977 and he also served as vice president of Virginia Farm Bureau Federation.

1944

JOHN H. SHERMAN, after 35 years in the paper business, has retired and moved from Darien, Conn., to Hampstead, N.C.

1946

FIELDER COOK has just finished directing a four-hour

film with Bette Davis for NBC which is expected to be aired in the fall.

S. HOBART LOCKETT has been named senior vice president of Marsh & McLennan, Inc. He was previously manager of the hull department of the Marine and Offshore Division of the company's New York operation. Lockett joined Marsh & McLennan, one of the nation's largest insurance brokerage firms, in 1951.

1947

RUSSELL M. DRAKE of El Segundo, Calif., is a photo journalist and a writer.

JOHN A. MCWHORTER, a prominent attorney in Washington, D.C., has been retained by the government of Panama to represent it in connection with a large underground hydroelectric project. McWhorter expects to do considerable travelling to and from Panama.

WARREN G. MERRIN, general manager of WSGN-AM in Birmingham, Ala., has been named to the additional post of vice president of Harte-Hanks Radio, Inc., the radio group of Harte-Hanks Communications, Inc.

DR. WILLIAM H. PIFER has practiced otolaryngology and head and neck surgery in Winchester, Va., for 24 years. He has two sons who have graduated from Washington and Lee and one son who is currently a sophomore.

1948

JOSEPH E. BLACKBURN, who joined the legal staff of Chesapeake & Potomac Telephone Co. in 1957 and was named vice president for regulatory and public affairs in 1974, has been elected vice president for financial and public affairs and secretary of the company. Blackburn served in the Virginia House of Delegates from 1954 to 1958.

JUDGE J. RANDOLPH TUCKER JR. recently retired as judge of the 13th Judicial Circuit. He lives in Richmond, Va.

1949

E. MCGRUDER FARIS is a visiting professor of law at Case Western Reserve in Cleveland.

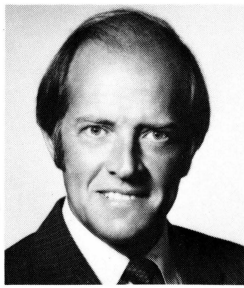
PERRY E. MANN, a former prosecuting attorney for Summers County, is now in private law practice in Hinton, W.Va.

1950

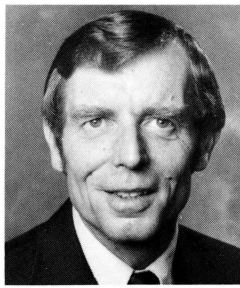
FRANK LOVE JR. is the president-elect of the State Bar of Georgia. He will take office in June 1982. Love is a partner in the Atlanta law firm of Powell, Goldstein, Frazer and Murphy.

1951

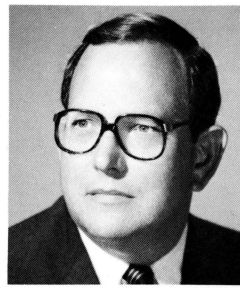
JOHN P. BOWEN, a Tidewater newspaperman, has written a book, *These Primal Years*, published by



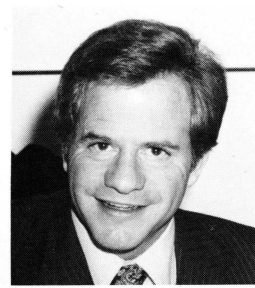
R. E. Bradford, '54



Dr. W. J. Stober, '55



W. J. Gibbs, '60



D. W. Thalacker, '61

Exposition Press. The book is about a young man's effort to find his way through a tangle of personal relationships to some clear sense of his own life.

FRANK LOVE JR. (See 1950.)

1952

PAUL D. WEILL is with Aetna Life and Casualty Insurance Co. and recently became the structured settlement consultant for the benefits planning service and sales of the life division marketing department. He is a resident of Weatogue, Conn.

1953

DR. ROBERT B. BELL has moved from the Medical Center at Clarksburg, W. Va., to Biloxi, Miss., where he is with the Veterans Administration Medical Center in psychology.

THOMAS B. PERKINS is manager for Travelers Insurance Co. in Washington, D.C. He and his wife, Carolyn, live in Oakton, Va.

1954

ROBERT E. BRADFORD has been named president and chief executive officer of the National Restaurant Association, the leadership organization of the food-service industry. From 1958 to 1968, Bradford was administrative assistant to former Virginia Congressman Richard Poff and later held the same position with Sen. Bill Brock of Tennessee. Bradford held top management positions at Firestone Tire and Rubber Co. and the Food Marketing Institute before joining the National Restaurant Association in January 1981. He and his wife, Nancy, have one daughter and they live in Great Falls, Va.

THE REV. PETER R. DOYLE received his doctorate in theology last year from Toledo Bible College. He wrote his thesis on Jonathan Edwards. Doyle is a minister in Auburn, Ala.

THE REV. WALTER EVANS SMITH, an Episcopal minister in Atlanta, Ga., has been elected secretary of the Georgia Association for Marriage and Family Therapy. He is an adjunct professor on the faculty at Emory University and president of the Atlanta Group Psychotherapy Society. Smith has also been elected to the board of directors of The Bridge, a treatment center in Atlanta for children and families.

JAMES R. TRIMM has his own law practice near his home in Potomac, Md. He recently completed a term as president of the Montgomery County Bar Association.

DR. WILLIAM C. WILLIAMS, a dentist in Richmond, Va., has been elected president of the board of directors of Needle's Eye Ministries, Inc., an interdenominational Christian outreach ministry to the business and professional community.

JUDGE WILEY R. WRIGHT JR., chief judge of the

circuit court of Alexandria, Va., is also vice chairman of the executive committee of the Judicial Conference of Virginia.

1955

LOWELL D. HAMRIC, formerly general manager of Chesapeake and Potomac Telephone Co. in Richmond has been appointed vice president for comptroller operations. He joined C&P in 1955.

DR. WILLIAM J. STOBER has been named chairman of the department of economics at the University of Kentucky in Lexington. He has been a professor of economics since 1969 and served as departmental director of graduate studies for three years. Stober and his wife live on a farm outside of Versailles, Ky.

1956

W. D. MANNING lives in Beachwood, Ohio. He is employed by Lubrizol Development where he is vice president. He and his wife, Carol, have three daughters.

JUDGE WILEY R. WRIGHT JR. (See 1954.)

1957

GAVIN LETTS, chief judge of the 4th District Court of Appeals in Palm Beach, Fla., was featured recently in a profile article in the *Daily News*, a local newspaper, as one of the influential people who have shaped the character of Palm Beach. He is a former president of the Florida Bar Association. An active and avid tennis player, Letts is a former president of the Florida Lawn Tennis Association.

1958

COL. ROSS G. PICKUS is stationed in Washington, D.C., at the Military Traffic Management Command as director of reserve affairs and training. He graduated in the class of 1980 from the Army War College.

1959

DWIGHT L. GUY is practicing law in Seattle, Wash., under the firm name of Guy & Loosmore.

1960

BIRTH: DR. and MRS. H. HUTSON MESSER, a son, Graham Hutson, on Aug. 7, 1980. Messer practices obstetrics and gynecology in Tallahassee, Fla.

WILLIAM J. GIBBS, formerly with the South Carolina National Bank, has joined the First National Bank of South Carolina in Charleston as vice president. Gibbs is a commercial loan officer. He is married to the former Jenny Morton of Englewood, N.J., and the couple has two children.

THE REV. PETER J. LEE will spend the fall of 1981 on sabbatical in London with his wife, Kristy, and their two children. He has been rector of the Chapel of the Cross in Chapel Hill, N.C., for ten years. In 1981 he was elected president of the standing committee of

the Episcopal Diocese of North Carolina and a deputy of the Diocese to the Episcopal Church's 1982 General Convention.

E. PETER LITTON is now in Austin, Texas, where he and his brother own and operate a restaurant called The Avenue.

1961

CMR. HAYES I. GORDON is currently serving as game director at the Center for War Games at the Naval War College, in Newport, R.I.

DONALD W. THALACKER, architect, author and director of the General Services Administration Art-in-Architecture Program, has written a book, *The Place of Art in the World of Architecture*. The book, officially released in June 1980 by Chelsea House Publishers, tells the story of Federal Art Commissions—how artists are selected, their process of artistic concept development and public reaction to installed artworks. Thalacker lives in Chevy Chase, Md., with his wife, Helene, and two children.

1962

BIRTH: MR. and MRS. J. LEYBURN MOSBY JR., a daughter, Mercedes Leigh, on April 25, 1981, in Lynchburg, Va. Mosby has been reappointed assistant general district court judge and juvenile domestic court judge for the 24th Judicial Circuit of Virginia.

STEPHEN W. RUTLEDGE is now in Dallas, Texas, where he is senior vice president and account service director for the advertising firm of Bozell & Jacobs, Inc.

1963

H. MICHAEL WALKER has been elected president of Guest Quarters Development Corp. in Norfolk. Guest Quarters is a hotel chain in which all accommodations are suites. They presently have a 349 suite hotel under construction in Houston's Galleria.

1964

JOSEPH R. BURKART is vice president for development of the Polytechnic Institute of New York.

FRED E. COOPER, of Flowers Industries, Inc., in Thomasville, Ga., was elected state chairman of the Georgia Republican party at the GOP State Convention in Atlanta in May. Cooper will remain in his position at Flowers during the two-year term as chairman. He joined Flowers in 1973 as general counsel, was elected secretary in 1974 and to the board of directors in 1975. In 1978 he was appointed to the additional responsibilities of corporate vice president.

STANLEY FINK is serving as secretary of the board of trustees of the Union County (N.J.) Bar Association.

DR. MATTHEW H. HULBERT is senior physical chemist with International Minerals and Chemical Corp. in Terre Haute, Ind.

W. B. (BUCK) OGILVIE, formerly with Agrow Management Corp. in Houston, Texas, has now become vice president of corporate development with Tomlinson Interests, Inc., a Houston firm engaged in the broad field of oil interests.

1965

BIRTH: MR. and MRS. THOMAS L. WOODWARD JR. a daughter, Susan Carter Anderson, on April 29, 1981. The young lady joins an older brother and the family lives in Suffolk, Va.

DR. W. KLINE BOLTON, associate professor of internal medicine at the University of Virginia, delivered a report in June 1981 to the International Congress of Nephrology meeting in Athens. The report was on the success of a drug treatment program he pioneered for patients with a certain type of glomerulonephritis. The drug treatment provides lower health care costs to these patients because renal dialysis and kidney transplants are no longer necessary.

VICTOR R. GALEF is vice president of market products and strategy for Menley & James Laboratories, a division of Smith Kline Corp. in Philadelphia, Pa. He resides in Malvern.

On March 1, 1981, PAUL W. HAMMACK JR. merged his law practice into the firm of Gabeler and Gastley in McLean, Va.

WOODARD D. OPENO lives in Portsmouth, N.H., and does historical and architectural research for the Museum of Afro-American History in Boston. He ran the 1981 Boston Marathon in a time of 2:58 and was recently elected a proprietor of the Portsmouth Athenaeum.

J. LEYBURN MOSBY JR. (See 1962.)

1966

BIRTH: MR. and MRS. J. D. HUMPHRIES III, a son, James Donald IV, on April 16, 1981. Humphries is a practicing attorney in Atlanta, Ga., and was recently named president-elect of the Lawyers Club of Atlanta.

DR. and MRS. JAMES E. REDENBAUGH, a daughter, Marcie Edwards, on Jan. 15, 1981. Redenbaugh practices medicine in Danville, Pa.

THOMAS R. KELSEY is practicing real estate and oil and gas law with the Houston firm of Hutcheson and Grundy. He has been a trustee of the Houston Ballet Foundation for five years. Kelsey and his wife, Ann, have three children, William, Margaret and Mavis.

1967

BIRTH: MR. and MRS. GUYTE P. MCCORD III, a son, Guyte Pierce IV on March 14, 1981, in Tallahassee, Fla. McCord is a partner in the law firm of Spector, Tunnicliff and McCord.

In May GALEN E. ANDERSEN traveled in Germany to attend briefings by vehicle and engine manufacturers

on the status of their plans for the commercial production of methanol fueled vehicles.

KIP ARMSTRONG is a professor at Bloomsburg State College in Pennsylvania. He will teach a course in Salzburg, Austria, this summer. Armstrong is also coach of the Bloomsburg Lacrosse Club.

EDWARD B. ROBERTSON received an accelerated promotion to major in the Air Force Reserve in April 1981. He is stationed in West Germany.

1968

MARRIAGE: CHARLES M. BERGER and Jean C. Yarborough on June 20, 1981, in Raleigh, N.C. Berger is senior counsel and assistant secretary of AMP, Inc., of Harrisburg, Pa., manufacturers of electrical connecting and switching devices. They live in Hummelstown.

BIRTH: MR. and MRS. JAMES W. BARTLETT III, a daughter, Polly Graves, on April 16, 1981, in Baltimore, Md. She has a 4-year-old brother, Matthew.

BARRY J. LEVIN is a partner in the Philadelphia law firm of Fox, Rothschild, O'Brien and Frankel where he specializes in estate and trust law. He and his wife, Gail, have two daughters, Rebecca, 4 and Anna, 1. He is president of HIAS and Council Migration Service and vice president of the Jewish Campus Activities Board in addition to other community activities.

1969

MARRIAGE: DAVID G. GORDON and Margaret deRosset McLean on May 23, 1981, in Fayetteville, N.C. The best man was J. Tucker Morse, '67, and ushers included Joseph H. Davenport III, '69, Alexis Tarumianz, '69, and Joseph Lykes III '70. They live in New York where Gordon is a partner in G. X. Clarke and Co., dealers in U.S. government securities.

BIRTH: MR. and MRS. H. WARD DORER, a daughter, Leigh Suzanne, on June 15, 1981. The young lady joins a 3-year-old set of twins, a brother, Craig, and a sister, Karen. The family lives in West Orange, N.J.

MAJ. RICHARD H. BASSETT was reassigned duty with the U.S. Army Logistics Assistance Office in Heidelberg, Germany, during April 1980. His duties are to resolve material readiness problems with tactical electronics warfare systems.

DR. R. GILLIS CAMPBELL was recently transferred within Ciba-Geigy Corp. to Mobile, Ala., where he is now in the analytical and quality control department. He and his wife have three children.

JEFFREY P. CROPSEY was recently awarded the degree of Doctor of Education by the University of Southern California. Cropsey is currently serving as chief of academic branch headquarters of the U.S. Air Force in Europe and is responsible for college and university programs operating on U.S. Air Force bases in

Keep Us Up To Date

Be a reporter for Washington and Lee. Use the space below to send us news of yourself so that we can publish it in these columns and keep your file current. And do we have your correct address? Each address change that comes to the alumni office from the post office costs 25 cents. Please help us avoid this expense by sending us your correct address.

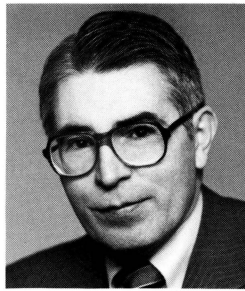
Name _____ Class _____

Address _____

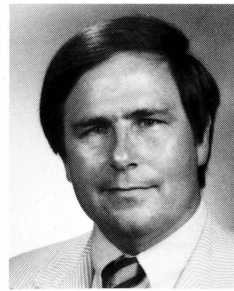
City, State, Zip _____

News Item _____

CLASS NOTES



W. A. Vaughan, '70L



A. V. Carr Jr., '71L

Western Europe. He and his wife, Christa, live in Frankfort, Germany.

THE REV. W. WILLIAM MELNYK will be ordained a deacon in the Episcopal Church in June 1981 and will serve the Church of the Ridge, a cluster of four small missions in the Diocese of Upper South Carolina. He and his wife and two children live in Leesville, S.C.

ROBERT A. MOSSELLE has opened his own general law practice with emphasis on entertainment and personal injury law in San Francisco.

STEPHEN A. SHARP has been appointed general counsel for the Federal Communications Commission. Prior to his FCC appointment, Sharp was a member of the Reagan transition team and had a private law practice. He lives in Alexandria, Va., with his wife, Lynn, and a daughter.

1970

BIRTH: MR. and MRS. MICHAEL C. G. NEER, a daughter, Cary Brooke, on May 12, 1981. She joins a 3-year-old brother and the family lives in Rochester, N.Y. Neer begins his sixth season as head basketball coach at the University of Rochester after a record of 20 wins last season in Division III competition.

BIRTH: MR. and MRS. KENNETH C. WALLACE JR., a son, Peyton Thomas, on April 21, 1981, in Philadelphia.

STUART C. FAUBER is presently assistant vice president and commercial loan officer at First & Merchants National Bank in Lynchburg, Va. He recently received his M.B.A. degree from Lynchburg College and was promoted to lieutenant commander in the Navy Reserve. He and his wife, Beth, have two daughters.

EDWARD A. (NED) POWELL JR. has been elected president of Miller Mfg. Co., Inc., a millwork, wooden box, manufactured homes, and other wood products firm in Richmond, Va. Powell led a group of investors who recently purchased the company. Prior to joining Miller, Powell was associated with First National Bank of Boston and the Sea Pines Co.

WILLIAM A. VAUGHAN has been officially nominated as an assistant secretary of the Department of Energy (Environmental Protection, Safety and Preparedness) and confirmation was expected in September. Since 1976, Vaughan has been director of energy management for the manufacturing staff of General Motors Corp. He joined General Motors in 1970 as an attorney on the corporation's legal staff. In 1971 he was named attorney-in-charge of the environmental law section to supervise legal activities involving GM's plant and engineering operations and related energy matters. Before joining General Motors, Vaughan was assistant professor of civil engineering at VMI. He is a registered professional engineer as well as a member of the American Bar Association and the State Bar of Michigan. The Vaughan family has moved from Michigan to Oakton, Va.

C. DOUGLAS WALKER, financial economist to the International Monetary Fund, was elected in November 1980 to serve additionally as staff representative to the organization's staff retirement plan. He also serves as a member of the board of directors of Washington Circle Associates, a limited real estate development partnership.

LARRY W. WERTZ, formerly with the Air Force, is now a member of the law firm of Williams, Brasfield, & Wertz, in St. Petersburg, Fla. He and his wife have two children.

1971

BIRTH: MR. and MRS. E. STAMAN OGILVIE, a son, Brian Staman, on July 7, 1981, in Houston.

BIRTH: MR. and MRS. DONALD E. WOODARD JR., a daughter, Catherine Virginia, on Nov. 4, 1980, in Houston. She has an older sister, Mary Elizabeth, who is now 2 years old.

H. JOHN ACKERMAN is the manager for credit analysis in the Industrial Gas Division—U.S.A. of Air Products and Chemicals, Inc., in Allentown, Pa. On May 1, 1981, he became a certified management accountant.

DR. THOMAS M. BEAZLIE practices internal medicine and nephrology in Hampton, Va. He and his wife, Lee, have three children.

WILLIAM P. CANBY serves as a vice president in the National Division of Trust Company of Georgia Bank in Atlanta. Canby was designated head of the eastern region.

ALBERT V. CARR JR. has joined Duke Power Co. in Charlotte, N.C., as an assistant general counsel. He had been with the Washington law firm of Lowenstein, Newman, Reis and Axelrad and had experience as a counsel with the Federal Power Commission and the Nuclear Regulatory Commission.

DR. LUCIUS D. CLAY is currently a resident in general surgery at St. Luke's Hospital in New York City.

ARTHUR F. CLEVELAND recently became assistant to the president for the Development Energy Group, Inc., a coal operation firm based in Memphis, Tenn. The company has interests in coal mining in Alabama, Illinois, Kentucky, Ohio, and Tennessee. He will continue to live in Spartanburg, S.C.

THOMAS W. CLYDE is administrative assistant to the president of T. B. Butler Publishing Co., Inc., publishers of daily newspapers in Tyler, Texas, and the East Texas area. He continues his interest in music and art collecting. Clyde earned his M.B.A. from Southern Methodist University in 1975.

BARRY W. MITCHELL is a fourth-year surgical resident at the Buffalo (N.Y.) General Hospital.

BARTOW W. RANKIN has resigned from James E. Lambert and Associates, Landscape Architects, in

Dallas to become project engineer for Heery and Heery, Architects and Engineers, Inc., of Atlanta. Rankin and his wife, Jennifer, are living in Atlanta.

1972

BIRTH: MR. and MRS. WILLIAM H. MILLER III, a son, William Herbert IV, on May 21, 1981, in Baltimore, Md.

BIRTH: MR. and MRS. SAMUEL L. OBENSCHAIN JR., a daughter, Elizabeth Lindsey, on Oct. 11, 1980, in Atlanta.

BIRTH: MR. and MRS. RICHARD R. ORSINGER, a son, Stephen Michael, on May 2, 1981, in San Antonio. He is an associate with the firm of Stewart, Hemmi and Pennypacker, family law specialists. Orsinger graduated from the University of Texas School of Law in 1975 and was recently certified in family law by the Texas Board of Legal Specialization.

DR. JOHN B. BLALOCK JR. is a general and vascular surgeon in private practice in Birmingham, Ala.

BRIAN GREIG was recently certified as a specialist in labor law by the Texas Board of Legal Specialization. He lives in Austin.

ROBERT D. LARUE was promoted in November 1980 to vice president in the real estate department of Houston's Allied Bank of Texas.

DAVID MANSON was recently given a teaching post in the English department at the Ecole Nationale de la Magistrature of the University of Paris. He has been in France since 1973 as a teacher and translator. In 1979 he was married to Nicole Travailleur, of Paris. He is presently finishing a novel entitled *The Fallen* which deals in part with his days as a student at Washington and Lee.

In May 1981 J. EVERETT NEWMAN III graduated from Indiana University School of Law in Indianapolis. He lives in Cromwell, Ind.

MAJ. W. WADE PEERY completed his general surgical residency at the Letterman Army Medical Center on June 30, 1981. He is now stationed at Fort Benning, Ga., as a staff surgeon.

MILLARD S. YOUNTS was elected to a second term as vice president of the National Daytime Broadcasters Association. He was also included in the 1981 editions of *Who's Who in the South and Southwest* and *Personalities of the South*. Younts is president of radio station WEEB in Southern Pines, N.C.

1973

MARRIAGE: WADE D. GOWL and Nina Maria Munteanu on July 12, 1980, in the chapel of the McDonogh School in Baltimore. Alumni attending the wedding were Norman Fagge, '74, Robert Wilson, '73, Charles Ross, '71, Stuart Perkins, '73, Ken Shirk, '71, and Joel Legin, '74.

BIRTH: DR. and MRS. TOWNSEND BROWN JR., a son, David Townsend, on Nov. 20, 1980, in Augusta, Ga. Brown completed a residency in dentistry for children at the Medical College of Georgia. In July 1981 he opened his own pedodontic practice in Virginia Beach.

BIRTH: MR. and MRS. CRAIG R. WILLIAMS, a daughter, Lisa Newman, on Nov. 16, 1980, in Spartanburg, S.C. Williams is a financial analyst for Grace Distribution Services, a subsidiary of W. R. Grace & Co. in Duncan, S. C. He is married to the former Martha Newman of Birmingham.

GARLAND H. DANIEL, is in Florence, Italy, as a senior systems analyst with Mobil Plastics Italiana for two years. He recently returned from a brief tour in Jeddah, Saudi Arabia, as part of Mobil's support of the East-West pipeline and other joint Mobil-Saudi projects.

JAMES R. DENNY III and his wife, Landis, are restoring an old home in Winchester, Va. He is president-elect of the Winchester Association of Life Underwriters, a director of Preservation of Historic Winchester and vice president of the Shenandoah Valley Travel Association.

T. HALLER JACKSON III is a partner in the law firm of Tucker, Jeter, Jackson & Victory in Shreveport, La. He is chairman of the membership committee of the Shreveport Bar Association as well as a member of the board of directors of the Shreveport Young Lawyers. Jackson is also president of an arts organization known as Crafts Alliance.

DENNIS W. MICHAUD has resigned as an officer of Chase Manhattan Bank to become vice president of finance for Satellite Cable Systems, Inc., a new cable television company in New York City.

NORWOOD E. PAUKERT JR. is working as an actor in Washington.

A. RICHARD SOTELO, after a two-year novitiate, has now pronounced first vows in the Society of Jesus. This past year he has taught history and American government at Loyola High School in Towson, Md. He will continue his studies in philosophy and theology and expects to be ordained as a Roman Catholic priest.

FREDERICK W. WOODWARD III is a senior account representative in the aviation/aerospace group of Marsh and McLennan, Inc., insurance brokers in New York.

1974

MARRIAGE: HANNES VAN WAGENBERG and Susan Tower Long of Washington, D.C., on July 26, 1980. He is completing a master's degree in international relations at the School of Advanced International Studies of Johns Hopkins University in Washington, D.C. Among the ushers in the wedding were Ken Seal, '74, Paul Perkins, '74, and Hannes' brother, Dries Van Wagenberg, '77.

BIRTH: MR. and MRS. WILLIAM R. SPOFFORD III, a daughter, Christina Hibbs, on March 15, 1981. Spofford has been transferred to Rolling Meadows, Ill., as senior financial analyst on the corporate staff of Anaconda Industries.

GARY MICHAEL ARTHUR is now at the General Theological Seminary in New York City and is manager of the Seabury Bookstores in the Episcopal Church Center.

JOHN M. SHERIDAN III received a degree of Doctor of Osteopathic Medicine from the West Virginia School of Osteopathic Medicine in Lewisburg. He expects to do an internship at the Delaware Valley Medical Clinic in Bristol, Pa.

DR. EDWIN O. WILEY has opened a dental practice in Warwick, N.Y.

1975

MARRIAGE: MARK PINSON and Elizabeth Ann Sadler on June 6, 1981, at Cape Cod, Mass. Alumni in the wedding party were J. D. Gottwald, '76, George Haw, '76, and Gregg Amonette, '75.

MARRIAGE: DR. JAMES E. POPE and Ellen Knox on Aug. 30, 1980, in Pasadena, Calif. In the wedding party was Phil Pendleton, '76. Pope is completing his residency in internal medicine at Bowman-Gray School of Medicine in Winston-Salem, N.C., and expects to remain at Bowman-Gray for a cardiology fellowship.

MARRIAGE: WILLIAM CLARKE SCOTT and Marion Mc. Mohler were married June 20, 1981, in Charlottesville, Va.

BIRTH: MR. and MRS. ROBERT ALAN COOK, a son, Michael Lee, on May 23, 1981. Cook is associated with the law firm of Semmes, Bowen & Semmes in Baltimore, Md.

BIRTH: MR. and MRS. STEVEN LACROIX, a daughter, Michelle Shannon, on April 26, 1981. The young lady joins two older sisters and the family lives in Sarasota, Fla.

WILLIAM (BURR) DATZ, after two years as assistant manager in the Washington and Lee dining hall, became assistant proctor under Charles (Murph) Murray. He is married to the former Alesia Fay Hall.

JOHN R. EMBREE, former captain of the W&L tennis team, is now employed by the United States Tennis Association with offices in New York City. He is the National League Tennis Administrator of the USTA/Michelob Light League Tennis, a new program for amateur adult tennis enthusiasts. He resides in Princeton, N.J.

Deloitte Haskins and Sells, an international accounting firm, has appointed DONALD M. HATHWAY a manager. He works in the audit area of the firm's Washington office. Hathway lives in New Carrollton, Md.

MURRAY T. HOLLAND, after receiving his M.B.A. from the University of Virginia and his law degree from W&L, is now practicing corporate and securities law with the Dallas, Texas, firm of Akin, Gump, Strauss, Hauer & Feld.

DAVID LEE, an employee of IBM, is also systems manager for Continental Cablevision of Richmond.

CAPT. SAMUEL R. LEWIS is an assistant staff judge advocate in the office of the command counsel at Headquarters DARCOM in Alexandria, Va.

ROBERT H. NICKEL is head of the audio-visual section of the Congressional Research Service of the Library of Congress where he has worked since 1977. He is responsible for producing video tapes and audio cassettes on various issues of national concern for congressmen and their staffs. He also produces orientation slide shows for new congressional staff. Nickel and his wife, Mary Lee, live in Potomac, Md.

CAPT. KIM STENSON is company commander in the 2nd B. T. Brigade at Fort Jackson, S.C.

1976

MARRIAGE: WILLIAM T. DRISCOLL III and Beth Urie on May 30, 1981, in Boston. The wedding party included Bill Wallace, '76, Mike Ferrara, '77, and Edwin Wright, '78. Among the guests were Temp Smith, '74, Tom Armstrong, '75, Henry Hauptfuhrer, '78, and Glen Stanford, '79. On their honeymoon in Bermuda, they saw Jim Norton, '76, and his wife, Sharon, who were also honeymooning there. They live in Norfolk.

MARRIAGE: DR. GARY W. SELDOMRIDGE and Karen Elizabeth Wehmann on June 20, 1981. Seldomridge graduated in May from the University of Pennsylvania School of Dental Medicine. He received the Martin J. Loeb Award given to a senior for outstanding leadership and was the student speaker at graduation. Seldomridge was commissioned a lieutenant in the dental corps in the U.S. Navy and has been assigned to the Navy Regional Medical Center in Orlando, Fla.

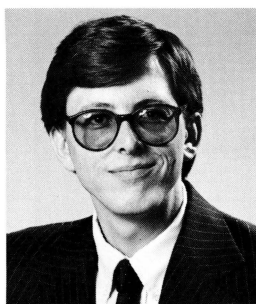
BIRTH: MR. and MRS. PAUL O. CLAY JR., a son, Nathaniel James, on Dec. 14, 1980, in Bluefield, W. Va. Clay is a member of the Fayetteville, W. Va., law firm of Conrad and Clay.

BIRTH: MR. and MRS. ALAN W. PETTIGREW, a daughter, Kendall Reams, on Nov. 27, 1980. Pettigrew is a real estate appraiser for the firm of John Stewart Walker, Inc., in Lynchburg, Va. In May 1981 he received his RM (Registered Member) designation from the American Institute of Real Estate Appraisers.

WILLIAM E. BIRBICK is a project engineer for Reynolds Metals Co. in Richmond. He has been with the company for four years.

THOMAS E. CAMDEN became assistant manuscripts curator at the New Hampshire Historical Society on

CLASS NOTES



D. C. Warren, '76

April 1, 1981. From 1976 until 1979, he worked as a research assistant at the George C. Marshall Research Foundation in Lexington. In December 1980, he received his M.S. degree in library science from the University of Tennessee. Camden lives in Concord, N.H.

MARK R. CHAMBERS finished his master of science in forestry degree at Stephen F. Austin State University in May 1981. The title of his thesis was "CRUSUM—A Computerized Timber Cruising Model."

DAVID K. EUBANK received his M.B.A. degree in finance from the American University in May 1981. He is employed as a management consultant in the commercial section of Ernst and Whinney's Washington office.

D. SCOTT FARRAR has joined W. Bolling Izard, Inc., of Roanoke, a bonding and insurance agency, as a producer of new business in all company lines.

DOUGLAS R. MUIR has been promoted to manager in the Winston-Salem, N.C., office of Price Waterhouse and Company. He is a member of the North Carolina Association of Certified Public Accountants.

KEN RUSCIO is a doctoral research fellow at the program analysis division of the General Accounting Office in Washington, D.C. He is writing his dissertation on government policy towards university-industry relations and expects to receive his Ph.D. degree from the Maxwell School of Syracuse University.

DAVID C. WARREN, a member of the auditing staff of Peat, Marwick, Mitchell & Co., Certified Public Accountants in Roanoke, Va., has been promoted to audit supervisor. Warren joined the firm of Berry, Dial & Co. prior to the firm's merger with Peat Marwick in July 1979. He is a member of the American Institute of Certified Public Accountants, the Virginia Society of Certified Public Accountants, and the Salem Jaycees. He and his wife, Denise, live in Christiansburg.

1977

MARRIAGE: SINCLAIR J. HARCUS JR. and Catherine T. McKenney on Aug. 23, 1980. Greer Barriault, '78, was best man and the wedding party included Rich Koch, '75, Jim Koch, '77, Dale Marden, '75, and David Harcus, '84. Also attending were Rick Stewart, '78, Sandy Stradtman, '77, Ed Dougherty, '79, David Greer, '80, Jon Grigg, '77, and Eric Greenbaum, '78. The groom graduated from the University of Virginia Medical School in May 1981 and continues to reside in Charlottesville for a residency in family practice.

MARRIAGE: JOHN W. RAVENHORST and Cari Colleen Young on May 17, 1981, in Williamsport, Md. Ravenhorst and his wife are both archaeologists for the National Park Service at Cape Cod.

MARRIAGE: JOHN H. WILSON and Heidi Marie Bergmueller on May 31, 1981, in Piscataway, N.J.

They live in Avenel, N.J., and Wilson is employed by the Siemens Corp. in Iselin.

MARRIAGE: DR. ISAAC L. WORNOM III and Susan Roberts in the summer of 1980 in Hampton, Va. In attendance at the wedding were: James C. Vardell III, '77, Robert B. Leithead, '77, and Stephen D. Good, '77, and the groom's brother, Thomas A. Wornom, '80. Serving as best man was his father, I. Leake Wornom Jr., '50. Wornom, after graduating from the University of Virginia Medical School, is now beginning his residency in surgery at the University of Alabama, Birmingham.

BIRTH: MR. and MRS. ANTHONY G. (TONY) PERRY, a daughter, Alana Elizabeth, in September 1980. Tony expects to make the rank of captain in the Finance Corps, U.S. Army, this summer and to be assigned to duty in Germany for three years.

DR. H. COBB ALEXANDER JR. began a year's internship with six months of medicine and six months of pediatrics, at Vanderbilt University on July 1, 1981. Upon completion, he plans a residency in orthopedics.

JOHN R. ARMSTRONG is employed as an exploration geologist by Mobil Oil Co. in New Orleans.

MICHAEL ARMSTRONG, after three years with the Austin Kelley Advertising firm in Atlanta, Ga., is now pursuing an M.B.A. degree at the College of William and Mary.

CAMILLUS L. (SANDY) AVENT, after receiving a bachelor of civil engineering degree from Georgia Tech in 1978, worked for two years as a construction engineer. Presently he is in the M.B.A. program at Georgia State University in Atlanta.

JAMES R. BROOKS, formerly with Marsh & McLellan, is now with the insurance firm of Johnson and Higgins in New Orleans as an account executive to the oil and gas team. He is married to the former Katherine Louise Owens.

STEVEN GABELMAN is a technical representative with Union Carbide Co. in Atlanta, Ga.

DR. EDWARD B. GERHARDT after graduation from the University of Virginia Medical School in May, will begin a surgery internship at Vanderbilt University Hospital in Nashville, Tenn. During the first part of 1981 he studied health care problems in Brazil under a scholarship from the University of Virginia.

LOUIS B. HACKERMAN is a scientific programmer in the applied mathematics branch of the Naval Surface Weapons Center in Silver Spring, Md.

RICHARD L. LOVEGROVE is a staff reporter for the Roanoke *Times and World-News*. He had been the Shenandoah Valley Bureau head for the paper with his office in Lexington.

JAMES B. MALLORY III was promoted to captain in May and was on the G-3 staff of the 82nd Airborne

Division at Fort Bragg. He left the Army in August to pursue a law degree at Wake Forest University.

WILLIAM H. SANDS is a buyer for Rheinauers in Winter Haven, Fla.

JAMES D. SCHAKENBACH has been appointed vice president of creative services for Chevalier Associates, a retail advertising and promotional agency in Worcester, Mass. Prior to joining Chevalier Associates, Schakenbach was creative director for WAAF/WFTZ radio in Worcester. He and his wife, Laura, reside in Southbridge, Mass.

DOUGLAS A. SCOVANNER is manager of planning and operations analysis for the Coca Cola Company in Atlanta.

MARK R. ULMER is an assistant attorney general for the state of Alabama, which he represents in criminal appeals, civil appeals and prisoner civil rights cases. He lives in Montgomery. Ulmer graduated from the Cumberland School of Law in Birmingham in May 1980 and passed the Alabama Bar that July.

WARREN T. WOLFE is a third-year student at the Wake Forest University School of Law.

1978

MARRIAGE: RICHARD W. DUNCAN and Susan Dosssett in January 1981. Duncan received his M.B.A. from the University of Texas in December 1980 and is now a consultant in management information systems for Arthur Andersen and Co. in Houston.

DAVID I. ABRAMS, assistant director of public information and publications at Sweet Briar College since September 1978, has resigned that post and will be working as a free-lance photographer in the Central Virginia area. He expects to continue doing photography for Sweet Briar on a free-lance basis. His wife, Mary, a student at Sweet Briar has published her first book of poetry.

ALEXIUS A. DYER III is a marketing representative in Jacksonville, Fla., for the Service Bureau Co., a subsidiary of Control Data Corp.

THEODORE H. GHIZ JR. graduated in May 1981 from the West Virginia University College of Law where he was a member of the Order of the Coif. He was also Notes and Comments editor for the West Virginia *Law Review* and in 1980 was author of an article *West Virginia's Generation of Electricity Tax: Is it Valid after Snead?* Ghiz is now in the legal department of Exxon Corp. and resides in Houston, Texas.

JOHN M. HILL and his wife, Harriett, live in Dallas. He has completed his first year of law school at Southern Methodist University.

ROBERT J. MARVIN JR. is a second-year student at Fordham School of Law in New York. He worked two years for IBM in Kingston, N.Y., and Hursley, England.

WILLIAM C. PORTH graduated in June from Harvard Law School and is now associated with the firm of Love, Wise, Robinson & Woodroe in Charleston, W. Va.

RICHARD JAY REED JR., after receiving his bachelor's degree from Tulane University, is now a second-year student at Louisiana State University Medical College in New Orleans.

DELAMBERT S. ROSE worked as a clerk during the summer for the Paris office of Rogers and Wells, an international law firm. He entered Washington and Lee Law School in August as a second-year transfer.

LLOYD R. SAMS spent the summer working for Wachovia Bank in Winston-Salem before returning to the University of North Carolina in Chapel Hill for his final year of his M.B.A. studies. He and his wife, Jane, serve as house directors for the Zeta Tau Alpha sorority.

WILLIAM R. SCHOOLEY is a first-year student at the University of Alabama Medical School.

JAMES G. SHERIDAN JR. received a master's degree in nuclear engineering in June 1980 from the University of Michigan. He is now employed by General Electric Co. and resides in Ballston Spa, N.Y.

JAMES H. VEGHTE was promoted to assistant secretary at the Reinsurance Corp. of New York. He and his wife, Debbie, live in Brooklyn Heights.

RICHARD T. ZINK is an account executive in the Baltimore office of Bache Halsey Stuart Shields, Inc.

1979

MARRIAGE: W. MICHAEL LEPCHITZ and Nathalynn M. Tucker on June 27, 1981, in Vinton, Va. They live in Bristol, Va., where Lepchitz is an associate with the law firm of William Rodgers McCall.

LOWELL R. BUCKNER, following graduation at Washington and Lee, worked several months for Mobil Exploration Norway, Inc., in Bergen, Norway. Upon his return to the States he entered the master's program at Biscayne College and after a short time with the Montreal Expos Baseball Club has completed his master's degree in human resources. In May 1981, Buckner accepted a position as personnel representative in the engineering department of Mobil Research and Development Corp. in Princeton, N.J.

B. MASON HAWFIELD received his M.B.A. degree from Wake Forest University in May and is now employed by the First Union National Bank in Fayetteville, N.C.

RICHARD F. HUCK III is a third-year student at the St. Louis University School of Law. During the summer he was a clerk for the St. Louis firm of Evans and Dixon.

RICHARD B. MAKOV, having earned an M.A. in Ger-

man in Mainz, Germany, in 1979-80 is now a second-year law student at Syracuse University.

NORVELL O. SCOTT III worked as a summer intern for the Norfolk law firm of Williams, Worrell, Kelly and Greer. He is a third-year law student at the University of Virginia.

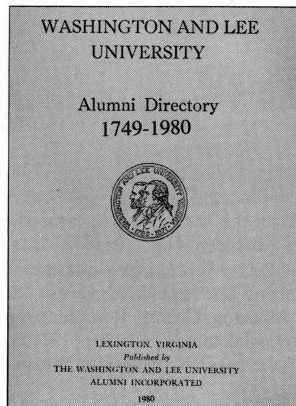
CLIFFORD B. SONDOCK recently became account officer for Chemical Bank in New York in the area of real estate finance.

JOHN P. STAFFORD is assistant to the president of Kerr Engineered Sales Co. of Pittsburgh, Pa.

PETER M. WILLIAMS has completed corporate training with Chemical Bank in New York. He is now assigned to the U.S. group working with the southern region. Williams shares an apartment in New York with Jamie Vardell, '77.

1980

ABNEY S. BOXLEY III entered the Darden Graduate



The 1980 Alumni Directory . . . Order Yours Now

The new up-to-date computerized Washington and Lee Alumni Directory, 1749-1980, is now available at only \$10.00 per copy, including postage.

The directory has three sections:

Alphabetical—Every person who has attended W&L since 1749 is listed alphabetically, together with his class, his degree, and his occupation.

Class List—A full list of the members of each class, including degree holders and non-graduates, appears in this section.

Geographical—Alumni are identified by states and by cities within the states and by foreign country if they live abroad.

No Washington and Lee alumnus can afford to be without this valuable reference book in his home or office. Use the form below to order your copy. *Mail to Washington and Lee Alumni, Inc., Lexington, Va. 24450.*

Please send me _____copy(ies) of the Washington and Lee Alumni Directory at \$10.00 each, including postage. Check is enclosed.

Name _____ Class _____
Please Print

Address _____

City, State, Zip _____

IN MEMORIAM

School of Business Administration at the University of Virginia in September 1981.

CHRISTOPHER BURNHAM has been commissioned second lieutenant in the Marine Corps and is stationed at Quantico, Va.

EDWARD I. CURRY III is a management consultant with Frye/Joure and Associates, a group of industrial and organizational psychologists. In the fall of 1981 he expected to enter law school at Memphis State Law School.

DAVID L. GARNER has completed his first year of graduate studies in geophysics at Cornell. He is working on a Ph.D. program. Garner had a summer job doing exploration geophysics for the International/South America Division of Cities Service Co. in Houston.

THOMAS E. GOSS JR. is an investment executive in the Cleveland, Ohio, branch of Shearson American Express, the international financial service company.

STEVEN C. HEROLD is a stockbroker with First Jersey Securities in Cherry Hill, N.J.

MICHAEL R. TESTERMAN has been admitted to the Louisiana Bar and is now an associate with the New Orleans law firm of Deutsch, Kerrigan and Stiles. He works in the firm's business section on labor, antitrust and general business matters.

KATHRYN E. WILKERSON is a deputy district attorney for the 14th Judicial District in Colorado. She lives in Winter Park.

1981

RONALD S. MOORE expects to graduate from Virginia Tech with a mechanical engineering major in 1983. He works in the summer with his uncle to develop computer software systems for the construction industry.

IN MEMORIAM

1910

RYLAND THORNTON PHELPS, a retired civil engineer from the Appalachian Electric Power Co. of Bluefield, W. Va., died in Ocala, Fla., on May 29, 1981. Phelps worked for Appalachian Electric for 42 years and retired as department head in 1953. He moved to Ocala where he operated a mobile home park for 14 years.

1915

DR. SAMUEL EARL OGLESBY, a prominent physician specializing in obstetrics and gynecology in Lynchburg, Va., died April 6, 1981. He was a 1942 diplo-

mate of the American College of Obstetrics and Gynecology.

1918

FRANCIS HOLMES STYLES, a foreign service officer with the State Department for 35 years, died in April 1981. During his career Styles worked in Bordeaux, France; Loanda, Angola; Durban, South Africa; Antwerp, Belgium; Sydney, Nova Scotia; Dublin, Ireland; Shanghai, China, and Goteborg, Sweden. He was a Mason and a member of the American Legion Post at Falls Church, Va.

1920

JOSEPH E. RICHARDSON, former president of the Mississippi Farmer Cooperative Board died May 13, 1981, at his home in Ridgeland. He was a member of the board of the Madison County Cooperative for 30 years, serving as president from 1954 until he retired in 1978. Richardson moved to Mississippi in 1926 from East Tennessee. He took an active role in the development of Angus cattle and soon had one of the finest herds in the state. He was a member of the Mississippi Aberdeen Angus Breeders Association. A veteran of World War I and a former member of the Washington and Lee Ambulance Corps, Richardson served as Madison County Representative in the Mississippi Legislature from 1956 to 1960 and served 14 years on the Madison-Ridgeland School Board.

HUGH McCLUER SHIREY a former employee of the investment firm of Tucker Anthony & R. L. Day in Rochester, N. Y., died Aug. 29, 1980. Before joining Tucker Anthony & Co., Shirey had been employed by Eastman Kodak Co. and National Cash Register. He was a veteran of World War I.

1922

CHARLES MILLER CAMPBELL, a retired owner and manager of Continental Stores, a retail hardware and sporting goods store in Vincennes, Ind., died in Naples, Fla., April 22, 1981. Campbell had retired to Florida several years ago and resided in Marco Island. In July of 1980 he moved to Naples.

1923

FRENCH RAYBURN MCKNIGHT, a resident of Helena, Ark., for the past 75 years, died July 6, 1981. McKnight was the former owner and operator of McKnight Veneer and Plywood Co. in West Helena. He was a member of the board of Helena Hospital for 16 years and held the office of vice president and president. He was also a member of the Helena Water Commission, the Helena-West Helena School Board, and a member of the St. Francis Levee District Board.

1924

JOHN MOREHEAD DOCKERY, retired regional manager for Greyhound Lines, died in Houston, Texas, on June 14, 1981. He was an active member of the administrative board of St. Luke's United Methodist Church. While at W&L, Dockery was a member of the football team. He recently returned to the campus for his first visit in over 50 years.

1925

ALLIE RAYMOND BENNETT, a banker for many years in Durham, N.C., died May 30, 1981.

DR. RAYMOND LYNWOOD CLATERBAUGH, a physician in Clifton Forge, Va., died July 1, 1980.

1930

HOWERTON GOWEN, a retired businessman and civic leader in Roanoke Rapids, N.C., died July 5, 1981. Gowen was founder and former president of Howerton Gowen Chemicals, Inc., and the Gowen Chemical Corp. of Chesapeake, Va. He was also president of the Acme-Olds Cadillac, Gowen Oil Company and Reinco Corporation in Roanoke Rapids. Following his graduation from Washington and Lee, Gowen was associated with the Continental Illinois Bank of Chicago before moving to Roanoke Rapids. He was a former director of Planters National Bank and Trust Company, Rocky Mount and a former president of the Roanoke Rapids Hospital. He served as president of the Roanoke Rapids Chamber of Commerce in 1955 and as president of the Halifax County Bicentennial in 1958.

1932

COLLAS GRANT HARRIS SR., a retired official of the Central Intelligence Agency and a retired colonel in the Air Force Reserve, died May 14, 1981. Since leaving federal service in 1968, Harris, a resident of Great Falls, Va., since 1937, had served as chairman of the Board of Equalization of Rural Property Assessment for Fairfax County. Harris began his government career in the early 1930s. In 1934, he went to work at the National Archives. Early in World War II, he took part in the transfer of various documents from the Library of Congress to vaults at Fort Knox, Kentucky. In 1942, Harris went on active duty in the Army Air Corps. His war service included assignments as a combat intelligence officer in the South Pacific. After the war, he returned to the National Archives, where he helped organize special display cases that would help preserve such documents as the Declaration of Independence. In 1952, Harris joined the CIA where he became a senior intelligence officer. During his tenure he was an assistant Air Force attache to Australia and New Zealand. He retired from the CIA and the Air Force Reserve in 1968. His papers, including official military memoranda and correspondence and other official publications, have been donated to the George C. Marshall Research Library at Virginia Military Institute.

1933

ERNEST FREDERICK LEATHEN, JR., a retired administrative assistant to the president of Raytheon Co., died Oct. 26, 1980. Leathen had begun with Raytheon in 1947.

1940

JAMES SKIDMORE SHIELDS JR., who had retired in 1977 and was very active in the Republican Party, died March 17, 1981. At one time he had been an agent with the John Hancock Life Insurance Co.

Gifts from the W&L Supply Store



A-7 Pennants: 8½ in. \$0.69; 15 in. \$1.99; 30 in. \$5.79; 4 in. patches \$1.49



B-3 Childs Quarterback Shirt \$8.99
B-3 "Go for it" Childs Shirt \$6.59
B-5 Childs Cotton Shorts \$4.69



B-13 Navy pile-lined rayon Coach's Jacket
[S M L XL] \$27.69



B-15 W&L Baseball Hat \$4.79
B-14 W&L Visor \$3.09
B-6 Adult Gym Shorts (polyester) \$8.29



B-4 W&L Polo Shirt \$14.99
B-4 Adult Athletic Dept. Jersey \$11.19
B-4 Chip Shirt (lacrosse, football, soccer, basketball) \$11.49



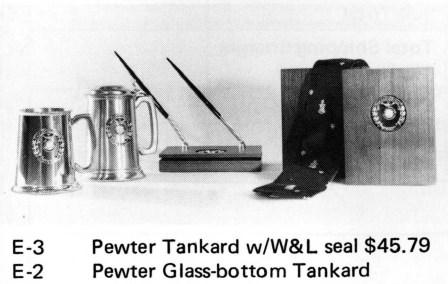
C-3 W&L Mug, 12 oz. \$8.19
C-2 Beer Stein, w/gold trim, 20 oz. \$9.69
C-5 Grandad Mug, 10 oz. \$7.29
C-4 Coffee Mug, 7 oz. \$4.89



B-3 Childs Baseball Shirt \$5.49
B-3 Childs V-neck T-Shirt \$5.99
B-3 Childs Logo T-Shirt \$4.49



D-1 Highball Glass, 12 oz. \$2.29
D-3 Double Old Fashioned, 15 oz. \$2.69
D-4 Single Old Fashioned, 7 oz. \$2.09
D-7 Brandy Snifter, 3 oz. \$3.89; 6 oz. \$5.59
D-5 Shot Glass, 1½ oz. \$1.39



E-3 Pewter Tankard w/W&L seal \$45.79
E-2 Pewter Glass-bottom Tankard w/lid \$58.69
A-1 Walnut Pen Sets \$51.79, \$61.49
A-2 Walnut Bookends \$43.29
B-1 W&L Tie \$11.29



B-4 Adult Baseball Shirt \$7.99
B-4 Adult Lacrosse T-Shirt \$6.59
B-16 Adult Velour Sweater \$18.69



F-2 W&L Key Rings \$5.29, \$7.49
F-3 Blazer Buttons \$29.19
A-12 W&L Cigarette Lighters \$8.29, \$9.59
F-1 W&L Charm \$4.99
F-4 W&L Lapel Pin \$13.29



B-11 Warm-up Pants \$14.39
B-12 Warm up Jackets \$15.59

A. HOME OR OFFICE

- 1. Solid Walnut Penstand . . .\$51.79, \$61.49
(1 lb. 4 oz.)
- 2. Solid Walnut Bookends \$43.29
(3 lb. 5 oz.)
- 3. Marble Paper Weight (8 oz.) . . . \$5.99
- 4. Letter Openers (4 oz.) . . . \$2.99, \$6.89
- 5. W&L Playing Cards (10 oz.) . . . \$6.29
- 6. Stationery (2 lb.) \$3.59, \$6.09
- 7. Pennants (6 oz.) 8 1/2" @ . . . \$6.69;
15" @ \$1.99; 30" @ \$5.79
- 8. W&L Blankets
Twin Size 905 — wool w/ rayon
trim & emblem (5 lb.) \$43.99
Twin size — 100% wool w/white
wool edging & emblem (4 lb.) . . . \$80.19
- 9. Walnut Paperweight (8 oz.) . . . \$16.29
- 10. Solid Walnut Ashtray \$23.99
(2 lb. 5 oz.)
- 11. Leather Ashtray (1 lb. 2 oz.) . . . \$7.50
- 12. Zippo Lighter (5 oz.) — regular . . \$8.29
slim \$9.59

B. CLOTHING

- 1. W&L Tie (6 oz.) \$11.29
- 2. Baby Bib (3 oz.) \$3.09
- 3. Youth T-Shirts [2-16] . . . \$4.49, \$8.99
(10 oz.)
- 4. Adult T-Shirts (1 lb.) . . . \$5.69, \$14.99
[S M L XL]
- 5. Youth Gym Shorts (7 oz.) . . . \$4.69
[S M L]
- 6. Adult Gym Shorts (13 oz.) \$4.89, \$8.29
cotton polyester
- 7. Sweatshirts, child (1 lb.) \$7.59
- 8. Sweatshirts, adult (1 lb. 5 oz.) . . \$10.99
- 9. Sweatshirts, hooded (1 lb. 12 oz.) \$14.59
- 10. W&L Nightshirts [S M L] (1 lb.) . \$7.39
- 11. Warm-up Pants (1 lb. 4 oz.) . . . \$14.39
[S M L XL]
- 12. Warm-up Jacket (1 lb. 4 oz.) . . \$15.59
[S M L XL]
- 13. Coach's Jacket [S M L XL]
Pile-lined (1 lb. 9 oz.) \$27.69
Flannel-lined (1 lb. 7 oz.) . . . \$19.99
- 14. W&L Visor (10 oz.) \$3.09
- 15. W&L Baseball Hat (10 oz.) . . . \$4.79

- 16. W&L Velour Sweater (1 lb. 6 oz.) \$18.69
- 17. W&L Sew-on Patch (2 oz.) . . . \$1.49

C. CERAMICS

- 1. W&L S&P Shakers, pr. (1 lb.) . . . \$5.99
- 2. W&L Mug, 20 oz. — Beer Stein . . \$9.69
(2 lb. 5 oz.)
- 3. W&L Mug, 12 oz. (1 lb. 4 oz.) . . \$8.19
- 4. W&L Mug, 7 oz. — Coffee (1 lb.) . \$4.89
- 5. W&L Grandad Mug, 10 oz. . . . \$7.29
(1 lb. 2 oz.)
- 6. Ashtray (1 lb. 2 oz.) \$6.59
- 7. Heart-shaped Box (8 oz.) \$5.39
- 8. Miniature Creamer (6 oz.) \$2.59
- 9. Miniature Beer Stein (8 oz.) . . . \$3.69

D. GLASSWARE

- 1. Highball, 12 oz. (15 oz.) \$2.29
[red & blue crest]
- 2. Highball, 12 oz. (15 oz.) \$2.89
[red & blue crest, gold rim]
- 3. Old Fashioned, double, 15 oz. . . \$2.69
[red & blue crest] (15 oz.)
- 4. Old Fashioned, single, 7 oz. . . . \$2.09
[red & blue crest] (12 oz.)
- 5. Shot Glass, 1 1/2 oz. (8 oz.) . . . \$1.39
[red & blue crest]
- 6. Ashtray, 6" square (1 lb. 14 oz.) . \$3.19
- 7. Brandy Snifter (11 oz.) . . \$3.89 & \$5.59
[3 oz. & 6 oz.]
- 8. Glass Tankard, 12 oz. (1 lb. 9 oz.) \$4.49
[red & blue crest]

E. PEWTER

- 1. Tankard (1 lb. 3 oz.) \$13.99
[with W&L crest]
- 2. Glass-bottom Tankard w/lid. . . \$58.69
(1 lb. 3 oz.)
- 3. Tankard w/W&L seal (14 oz.) . . \$45.79

F. JEWELRY

- 1. Charms, W&L seal, (3 oz.) \$4.99
[gold & silver]
- 2. Key Rings (3 oz.) . . \$5.29, \$7.19, \$7.49
[w/W&L charm, gold & silver]
- 3. Blazer Buttons (5 oz.) [18 ct.] \$29.19
gold filled, blue & white enamel]
- 4. Lapel Pin, gold w/seal (3 oz.) . . \$13.29

TO DETERMINE ZONE, TAKE FIRST THREE DIGITS OF ZIP CODE TO WHICH PARCEL IS ADDRESSED AND REFER TO CHART BELOW

ZIP CODE PREFIXES	ZONE	ZIP CODE PREFIXES	ZONE	ZIP CODE PREFIXES	ZONE
010-041 4		380-381 5		676-679 6	
042-049 5		382-385 4		680-687 5	
050-069 4		386-387 5		688-693 6	
070-089 3		388 4			
		389-396 5		700-729 5	
100-139 4		397 4		730-739 6	
140-143 3				740-749 5	
144-146 4		400-402 4		750-752 6	
147-149 3		403-418 3		754-757 5	
150-156 2		420-424 4		758 6	
157-158 3		425-426 3		759 5	
159 2		427 4		760-775 6	
160-171 3		430-433 3		776-777 5	
172-174 2		434-436 4		778-797 6	
175-199 3		437-438 3		798-799 7	
		439 2			
200-217 2		440-458 3		800-810 6	
218-219 3		460-469 4		811-816 7	
220-232 2		470 3		820 6	
233-237 3		471-497 4		821 7	
238-241 2		498-499 5		822 6	
242 3				823-826 7	
243-274 2		500-528 5		827 6	
275-288 3		530-534 4		828-832 7	
289 4		535-566 5		833 8	
290-293 3		567 6		834 7	
294 4		570-571 5		835-838 8	
295-297 3		572-588 6		840-847 7	
298-299 4		590-597 7		850-853 8	
		598-599 8		855-860 7	
300-322 4				863-864 8	
323-325 5		600-611 4		865-880 7	
326 4		612 5		881 6	
327-339 5		613-622 4		882-883 7	
350-363 4		623 5		884 6	
364-366 5		624-633 4		890-898 8	
367-368 4		634-636 5			
369 5		637-639 4		900-961 8	
370-374 4		640-675 5		970-986 8	
376-379 3				988-994 8	

ANY FRACTION OF A POUND OVER THE WEIGHT SHOWN TAKES THE NEXT HIGHER RATE

WEIGHT NOT TO EXCEED	RATE CHART TO GROUND ZONES							
	2	3	4	5	6	7	8	
1 lb.	\$1.79	\$1.81	\$1.85	\$1.89	\$1.95	\$2.00	\$2.07	
2 "	1.89	1.94	2.00	2.08	2.19	2.31	2.44	
3 "	1.98	2.05	2.15	2.27	2.44	2.61	2.82	
4 "	2.07	2.17	2.31	2.46	2.68	2.92	3.18	
5 "	2.16	2.28	2.46	2.65	2.93	3.22	3.56	
6 "	2.25	2.41	2.61	2.85	3.17	3.53	3.93	
7 "	2.35	2.53	2.76	3.03	3.42	3.84	4.31	
8 "	2.44	2.64	2.92	3.22	3.66	4.14	4.67	
9 "	2.53	2.76	3.07	3.42	3.91	4.45	5.05	
10 "	2.62	2.88	3.22	3.60	4.15	4.75	5.42	
11 "	2.72	3.00	3.38	3.80	4.41	5.05	5.80	
12 "	2.82	3.12	3.53	3.99	4.65	5.36	6.16	
13 "	2.91	3.23	3.68	4.18	4.90	5.66	6.54	
14 "	3.00	3.36	3.84	4.37	5.14	5.97	6.91	
15 "	3.09	3.47	3.99	4.59	5.39	6.28	7.29	
16 "	3.18	3.59	4.14	4.76	5.63	6.58	7.66	
17 "	3.28	3.71	4.30	4.94	5.88	6.89	8.03	
18 "	3.37	3.83	4.45	5.13	6.12	7.20	8.40	
19 "	3.46	3.95	4.60	5.33	6.37	7.50	8.78	
20 "	3.55	4.06	4.76	5.51	6.61	7.80	9.15	
21 "	3.65	4.18	4.91	5.71	6.87	8.10	9.52	
22 "	3.74	4.31	5.06	5.90	7.11	8.41	9.89	
23 "	3.84	4.42	5.21	6.09	7.36	8.72	10.27	
24 "	3.93	4.54	5.37	6.28	7.60	9.02	10.64	
25 "	4.02	4.65	5.52	6.47	7.85	9.33	11.01	

You may order from the listed items, many of which are pictured. A check or money order including the item(s) price, tax (if applicable), and the shipping charges, computed by use of charts, must accompany your order before it can be processed. Feel free to call the W&L Supply Store (703-463-9111 ext. 312) to discuss any details.

All Prices Subject to Change Without Notice.

Item Letter/No.	Description	Size	Qty.	Weight lb. oz.	Unit Price	Total Price

Send your order to:
Washington and Lee University Supply Store
Lexington, Va. 24450

*Shipping Charges:
After compiling total weight, refer to Zip Chart to find your zone, then Rate Chart using appropriate zone and poundage.

Total Weight

Sub Total

Total Shipping Charges
*(refer to charts)

4% Tax (Va. residents only)

Enclose check or money order for:

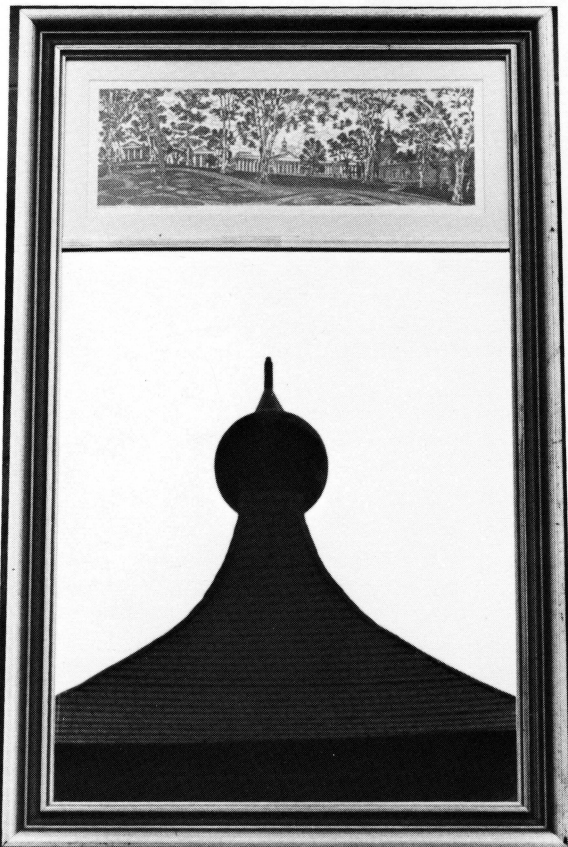
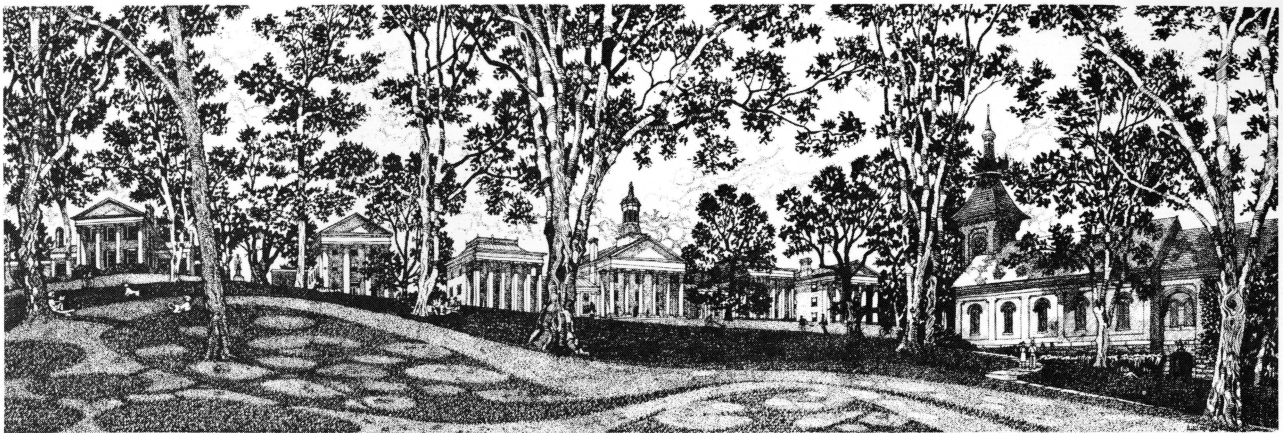
SHIPPING INFORMATION

Name

Address

Zip

Telephone No. & Area Code



The steeple of Lee Chapel is reflected in the Washington and Lee Mirror with Ahern hand-tinted print matted at the top. The mirror is available with frame finished in French gold or Colonial cherry.

Now available . . .

Panoramic Prints Of the Front Campus Of Washington and Lee

A sweeping, delicately rendered view of Washington and Lee's historic Front Campus, drawn by artist Rich Ahern, is available in hand-tinted full color or in black and white and in two sizes. It is also available combined with a handsome mirror with frame finished in French gold or Colonial cherry. These prints and the mirror will complement both traditional and contemporary homes. Shipped by U.P.S.

MIRROR—Outside measurements 15 by 24½,
(mirror itself 14 by 17¼), frame in French
gold or Colonial cherry, hand-tinted print
matted at the top\$125.00
(Add \$12.50 for shipping)

SMALL PRINT—Outside measurements
17 by 8 Hand-tinted Color—double
matted and shrink wrapped\$ 29.75
Color Print only\$ 18.50
Black and White\$ 5.00
(Add \$3.00 for shipping)

LARGE PRINT—Outside measurements 27½ by 10¾
Hand-tinted Color—double matted and
shrink wrapped\$ 56.20
Color Print only\$ 32.50
Black and White\$ 8.00
(Add \$3.00 for shipping)

Virginia residents add 4% sales tax.

Make checks payable to the Washington and Lee Bookstore.

Send your order to:

The Bookstore
Washington and Lee University
Lexington, Virginia 24450

The Alumni Magazine of
WASHINGTON AND LEE UNIVERSITY
(USPS 667-040)
Lexington, Virginia 24450



Second Class Postage Paid
At Lexington, Virginia 24450
And Additional Mailing Offices

MR DANIEL T BALFOUR
211 RALSTON RD
RICHMOND VA
23229

037556

Washington and Lee University Alumni, Inc.
Presents...

EUROPE

ITALY — SWITZERLAND — FRANCE

November 27-December 12, 1981
Dulles Departure

FOR ONLY...

\$1695.00 Per person-double occupancy

TOUR TRIP FEATURES:

Jet transportation to Rome, Italy, via Pan American Airways' wide-bodied aircraft, and return flight from Paris, France. Deluxe transfers between cities. Deluxe accommodations for four nights in Rome at the Grand Hotel, Beverly Hills with full buffet breakfast daily, a Gala Welcome Dinner in a typical Roman restaurant. Three nights in Florence at the Jolly Hotel (or similar). Continental breakfast daily, and a farewell dinner a "Falciani". Deluxe accommodations for three nights in Anzere at the Hotel Zodiac including Continental breakfast daily and a typical Swiss Raclette dinner. One night in Geneva at the Royal Hotel with Continental breakfast. Paris. Deluxe accommodations at the Paris Sheraton for three nights, Continental breakfast daily, gala Parisian Welcome and Farewell dinners. Dine-around dinners on five additional evenings in Rome, Anzere and Florence. All applicable portorage fees in Italy, Switzerland and France. All domestic and foreign arrival and departure taxes. Pre-registration at all hotels. Welcome Orientation. Fully escorted by Arthurs Travel's on-site team of professionals. Exciting low-cost optional tours will be made available.



For further information and
reservation coupon, contact:
**W.C. Washburn, Washington and
Lee University Alumni, Inc.**
Lexington, Virginia 24450
PHONE: (703) 463-9111 ext. 214